



Proctors.org

432 State St., Schenectady, NY 12305

(518)382-3884

DD: 42.811322, -73.942201

## **GE Technical Package**

As of 6/27/2025

### **THEATRE STAFF**

**Email address format is first initial, last name @proctorscollaborative.org**

CEO	Philip Morris	(518)382-3884 Ext. 113
Chief of Staff	Jean Leonard	(518)382-3884 Ext. 127
Operations Director	Dan Sheehan	(518)382-3884 Ext. 116
Production Manager (Adv. Contact)	Drew VanGenderen	(518)475-8942
Technical Director	James Petersen	(518)382-3884 Ext. 132
Merchandise & House Manager	Cindy Laroe	(518)382-3884 Ext. 183
Venue Rentals & House Manager	Judie Bouchard	(518)382-3884 Ext. 153

### **TABLE OF CONTENTS**

Dimensions.....	2
<i>Stage Dimensions, Seating Capacity, Seating Addendum</i>	
GE Floor Plan.....	3
General Site Information.....	4
<i>Directions, Loading, Parking, Theater Access, GE Atrium</i>	
Venue and Parking Maps.....	5-6
ADA Accommodations.....	7
<i>Handicap Accessibility, Hearing Assist</i>	
Electrics.....	8
<i>Power Service, Control, Front of House, Inventory</i>	
Audio.....	9
<i>Speaker Systems, Front of House, Intercom</i>	
Projection.....	9
Grid Information .....	10
Stage Inventories.....	10-11
<i>Masking, Staging, Miscellaneous, Diagram of Standard Masking</i>	
Wardrobe and Dressing Rooms.....	12-14
<i>Dressing Room Descriptions, Floor Maps</i>	
General Schenectady Information.....	15-18

## DIMENSIONS

### Performance Area

*Floor surface is Masonite, painted black	
Seating completely extended (14 Rows)	56' x 16'
Seating partially retracted (8 Rows)	56' x 26'
Seating partially retracted (3 Rows)	56' x 32'
Seating completely retracted	64' x 40'

### Offstage

Stage Right from Centerline	34'
Stage Left from Centerline	34'
Ceiling Height (to clouds out at trim)	42' (approximately)

## SEATING CAPACITY

Seating fully extended	434 + 4 wheelchair access spaces
Seating partially retracted (8 Rows)	244 + 4 wheelchair access spaces
Seating partially retracted (3 Rows)	78 + 4 wheelchair access spaces
Seating fully retracted (0 Rows)	0

## SEATING ADDENDUM

Row A	27 Seats
Rows B-H and J-N	31 Seats
Row P	35 Seats

Floor seating is possible with conference chairs, adding 31 seats.

Row A is missing 4 seats, 2 from each end. These can be filled with conference chairs.

All rows are missing chairs 9/10 and 26/27 to make the aisles. Except row P with a complete 35.

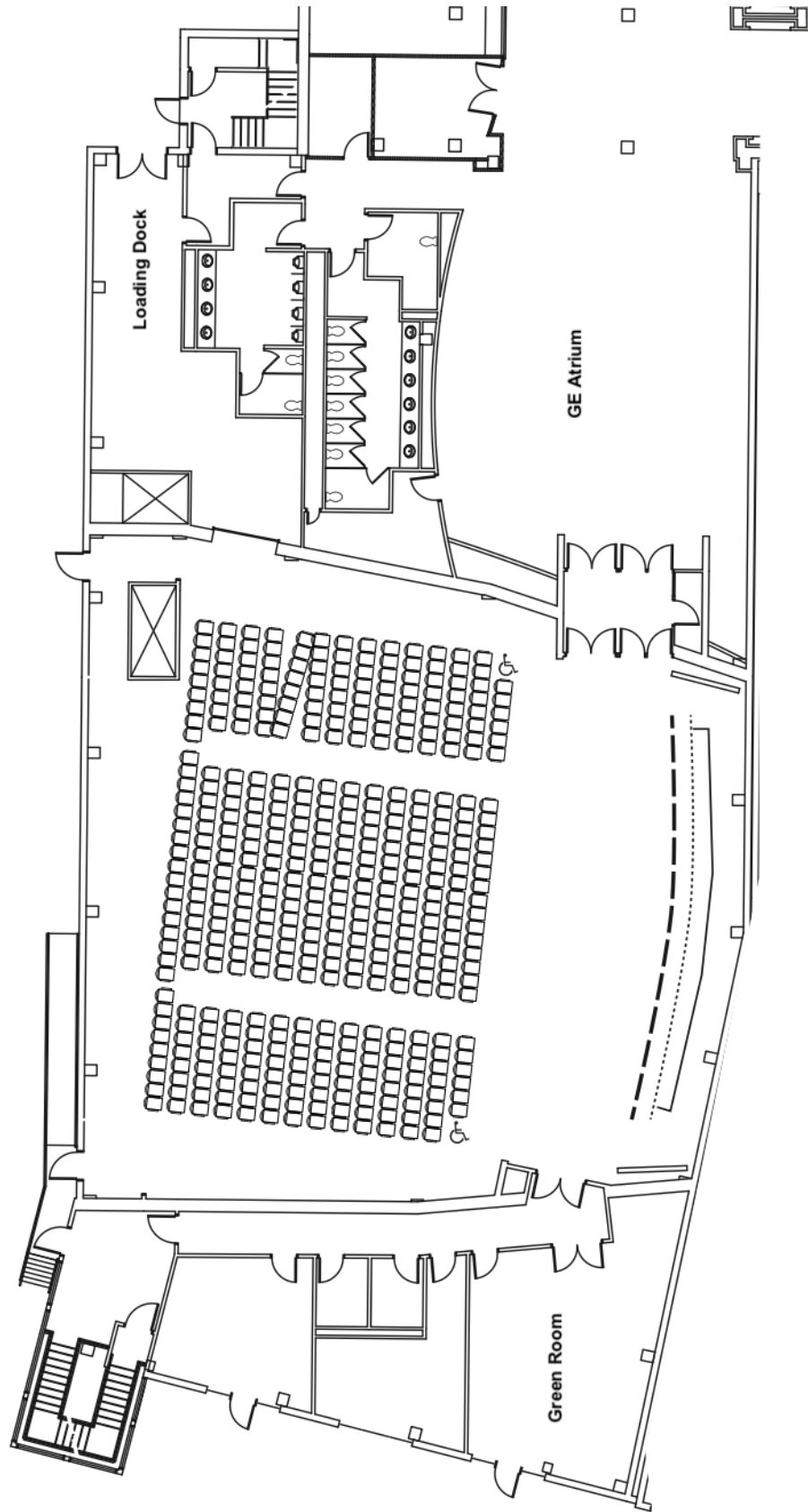
Chair numbering is from House Right to House left.

Rows are lettered A-H / J-N / P from floor to top row. There is no row I or O.



\*Seats are Fully Extended in this image

**\*\*NOT TO SCALE\*\***



## GENERAL SITE INFORMATION

### Directions \*For Deliveries only

Directions to loading doors: Rt. 890 to Broadway exit. Follow signs for Proctors. At the first traffic light stay in the center lane and continue on Broadway. 1/2 block past Clinton Street turn right onto Stratton Plaza (pedestrian mall opposite the parking structure). Turn left onto lamp lane. GE Theatre loading doors are on the right and 3/4 down the alley. Please do not park personal vehicles in the alley.

### Loading

The main loading area is accessed from the alley (Lamp Lane) through a set of street level double doors (5'9" x 6'6"). It is a 45' distance from the loading doors, through the space's storage area, to a roll-up door (8' x 10') leading into the performance space. This roll-up door is located DSR near the rear of the seating area. The loading/storage area contains a slop sink and is regularly used as a prep space for catered events.

### Parking

Please do not park personal vehicles in the alley. All personal vehicles can be parked in the Parking Garage located across Broadway from the Lottery Building, accessible by Hamilton St.

### Theater Access

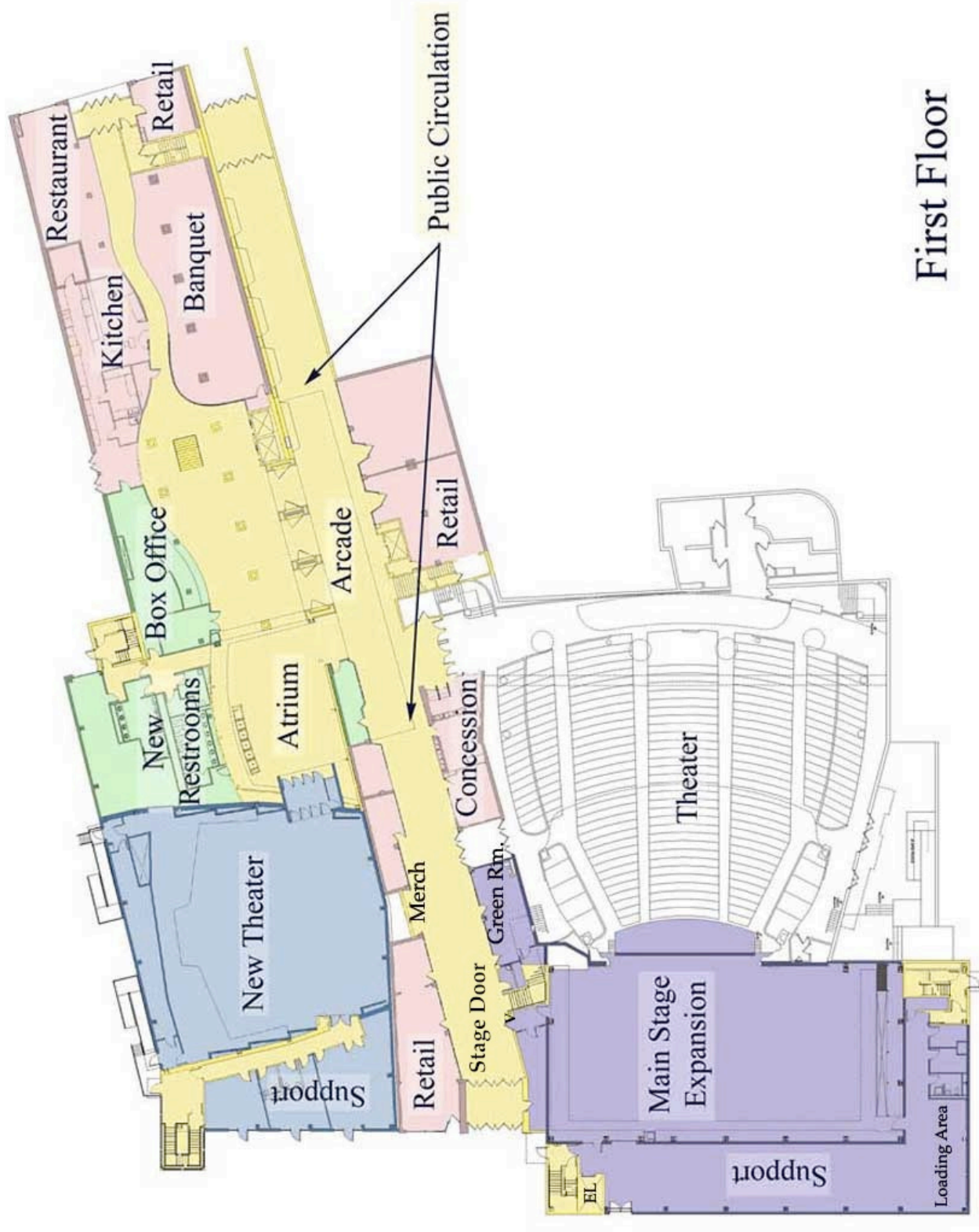
- There are two single doors, one DSL and DSR located behind the seating area, at street level. These doors open directly onto Lamp Lane and are also used for emergency exits.
- Access to the stage from the dressing rooms is via a double door that opens directly into the performance space. This door also serves as an emergency exit.
- **There is no completely masked performer crossover.** Performers may use the space behind the movie screen as a crossover, but only with advance permission. The crossover space is narrow and contains hazards.
- There is also a crossover space downstage behind the seating area. It is approximately 6' x 56' and may also be used for temporary storage
- Due to access issues into the space once the performance has begun, we usually hold seats in the first row or two in the center seating section for VIP's. The front two rows HL are held for late seating (see the GE Theater Map)

### GE Atrium

Dimensions are 50' x 30'. This is the main entrance into the space for patrons.

This space is available for merchandise sales, Please contact Cindy Laroe for further information.

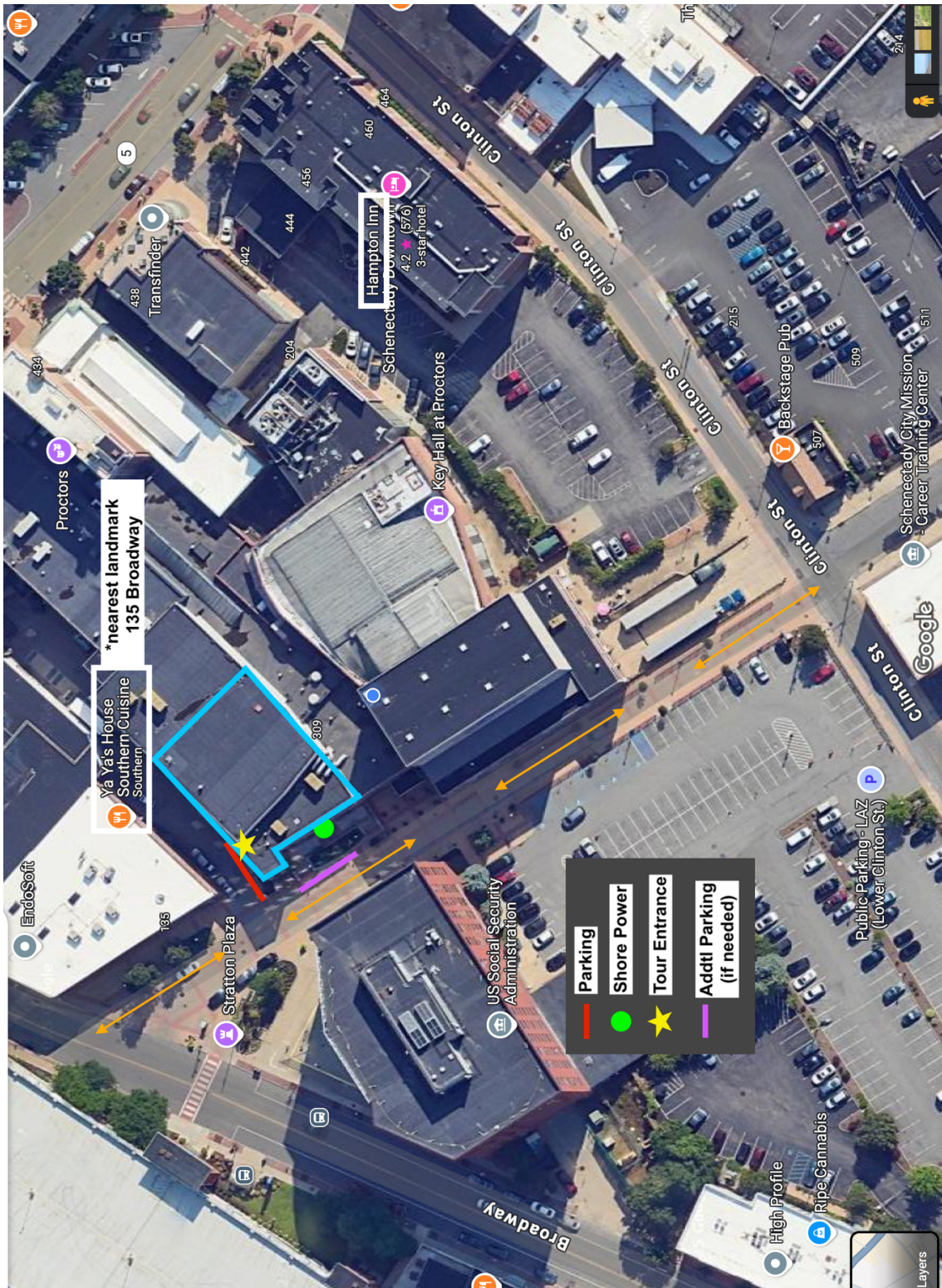
The Atrium has a projection screen and a Sharp 3200 lumen video projector.



First Floor



## Venue Parking Map





## **ADA ACCOMMODATIONS**

### **Wheelchair/Mobility Aid Accessibility FOH**

- Both our State Street and Stratton Plaza entrances have button activated door openers to allow easy access into the building.
- The GE Theater is located on the main level of the building, there are no additional steps or ramps to get into the venue.
- Wheelchair accessible seating is located house left in front of the retractable seating on the stage level.

### **Wheelchair/Mobility Aid Accessibility Aid Backstage**

- When loading in via the alley way off of Stratton Plaza (Lamp Lane) there is an external ramp that has doors leading to the dressing room area as well as the DSL/House Right side of the venue. There is also a street level door on the DSR/House Left side of the venue with an internal ramp.
- Unfortunately, there is no wheelchair access to the booth of this venue as it is a few flights of stairs above the stage floor.

### **Hearing Assistance**

- An FM based hearing assist system is installed within the theater, assisted hearing devices are available for loan at our box offices.

**\*Other Accommodations can be made upon request prior to event.**



## **ELECTRICS**

### **Power Service**

1 x 100 Amp Three Phase USL (bare ends required)

### **Control**

(1) LMI 48 x 2.4kw Rack

(1) ETC Ion

Houselights are controlled via an ETC Sensor rack using one of the submasters.

### **Front of House Inventory**

(4) Scoops

(8) LED Par Lights

(24) Lekos

**\*Spotlights must be rented and need to be requested in advance\***

### **Overhead Inventory**

US Elec. 2 color cyc/screen wash

DS Elec. 2 color wash and pipe ends

\*The GE Theater has access to additional inventory from the Mainstage, subject to availability.



## **AUDIO**

### **Speaker Systems**

Main system is flown in a Left/Right configuration with (4) d&b T10 and (2) d&b T-sub subs per side. Powered by (3) D6 amplifiers

### **Front of House**

Console position is located in the catwalk area SR and is a Yamaha QL-5

- (1) Yamaha Q2031A Stereo EQ
- (1) Yamaha YDP 2006 Parametric EQ
- (1) Alesis Quadraverb
- (2) DBX-166
- (1) Denon DN-C615 CD Player
- (20) Ch. Snake, all XLR

### **Intercom**

Clear-Com base station installed. There is a backstage monitoring system installed in each dressing room.

\*The GE Theater has access to additional inventory from the Mainstage, subject to availability.

## **PROJECTION**

- (1) SimEx Iwerks 70mm 3-D Projection System
- (1) Iwerks Projection Screen, 50'9" x 38'0"
- (1) Eiki HDT20 Video Projector

## GRID INFORMATION

- There is no theatrical fly system available in this venue.
- Two winch lines are available at approximately 4' and 12' from USC

## STAGE INVENTORIES

### Masking

- (5) Ceiling clouds (approx.. 4' x 52') can be trimmed to tune the room. The panels contain houselighting fixtures and are painted black. They trim out at approx. 42'.
- All walls have black curtains with fullness
- The Iwerks screen can be masked with a black curtain with fullness. The curtain is winch operated, located USL.
- Additional pipe and drape masking can be installed upon request.

### Staging \*subject to availability

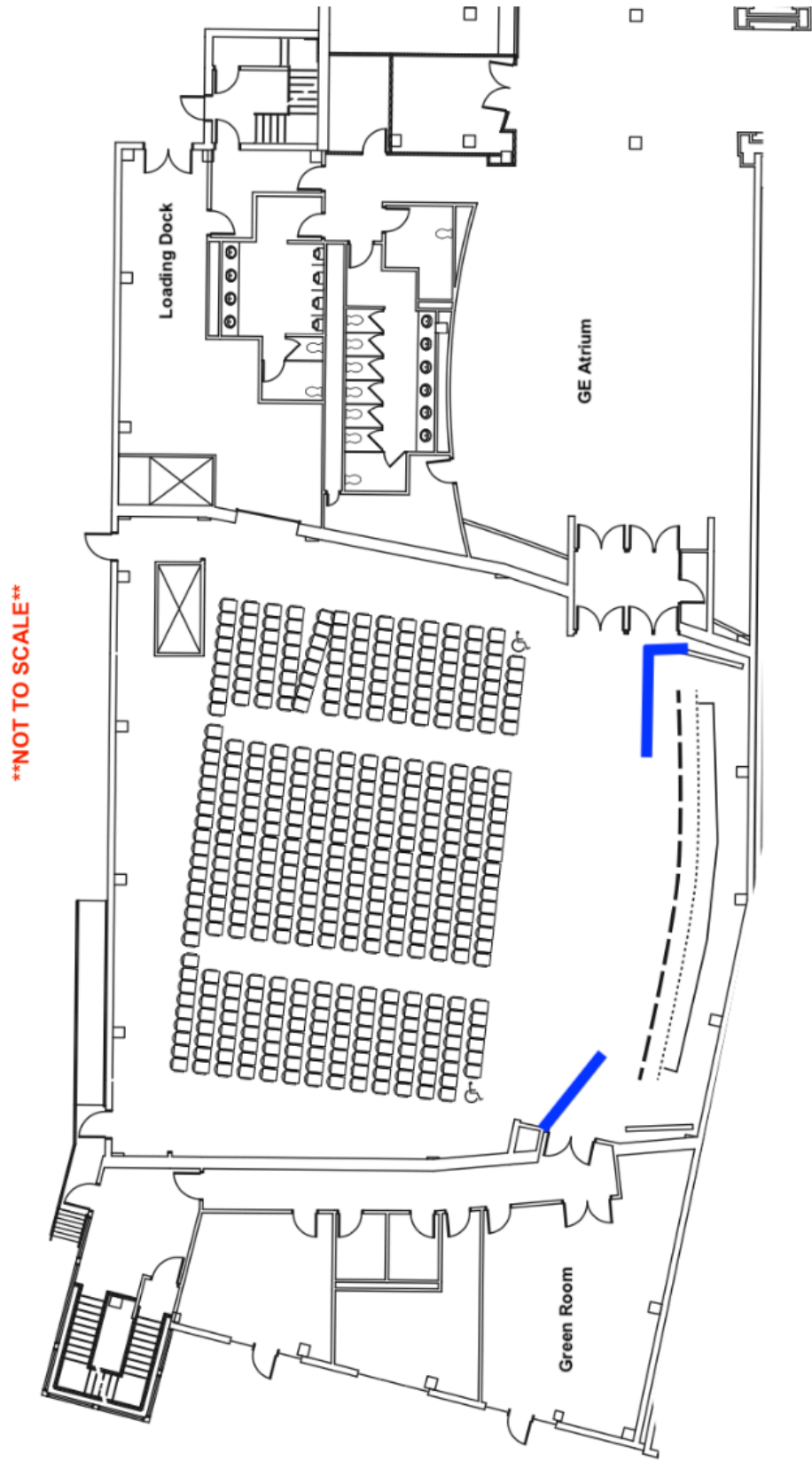
4	4' x 8' x 8" Risers
4	4' x 8' x 16" Risers
4	4' x 8' x 24" Risers
4	4' x 8' x 32" Risers
8	4' x 8' caps capable of being legged to any height.
2	4' x 4' caps capable of being legged to any height.
6	3-step choral risers

### Miscellaneous

110	Black Padded Chairs
TBA	Round Hi-top Tables
TBA	Round Dining Tables
TBA	6' x 8' Tables
70	Music Stands
1	Baldwin SD
2	Upright rehearsal pianos (available with advance notice)
1	Genie Lift
7	Rolls of Harlequin dance floor, 59' x 50' with black matte finish
5	Rolls of generic dance floor, 78' x 48' with black satin finish

\*Some orchestral percussion equipment may be made available upon request.

\*Wardrobe racks can be made available upon request



**\*example of pipe and drape wings, available upon advance request**

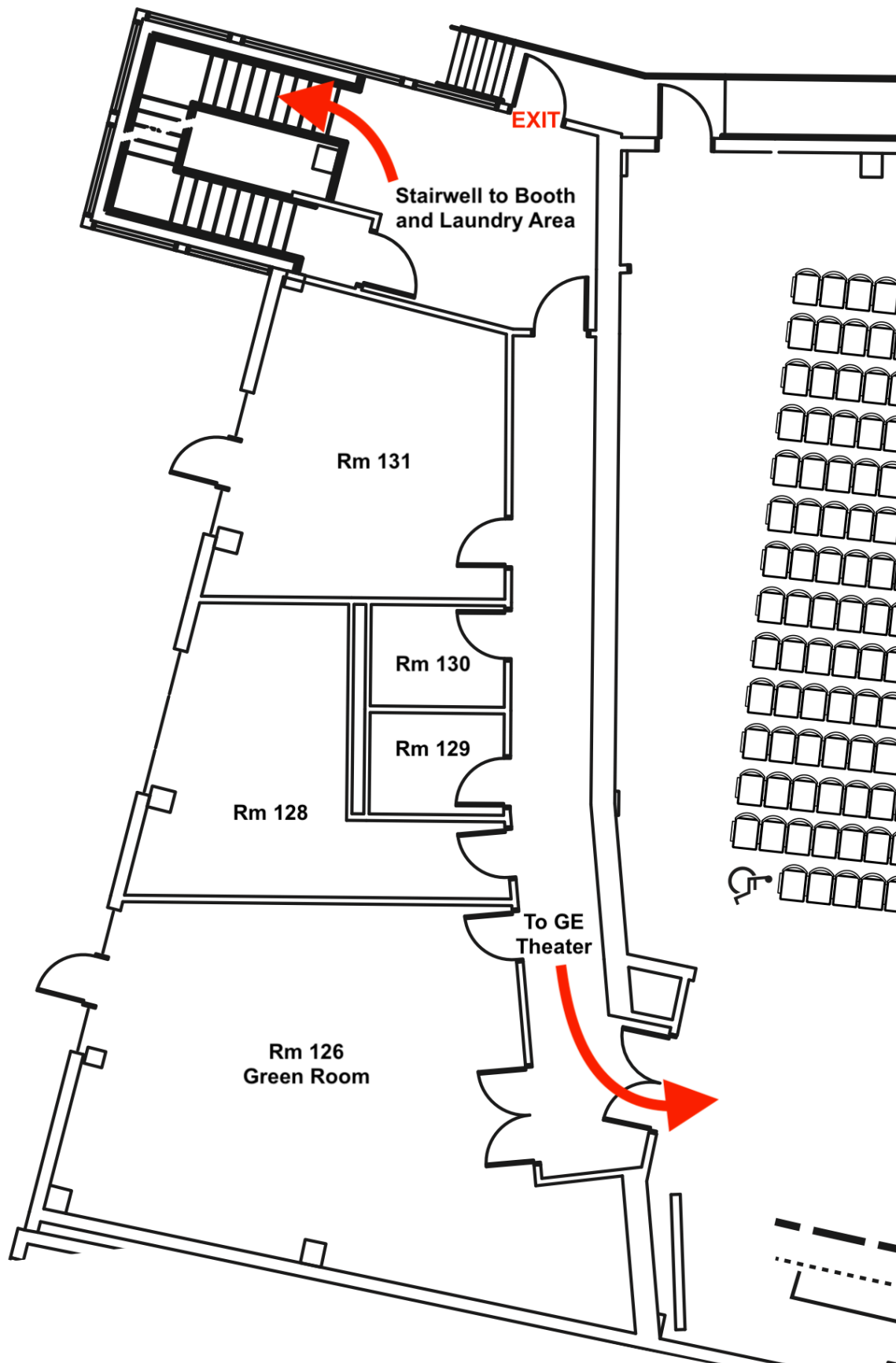
## **WARDROBE AND DRESSING ROOMS**

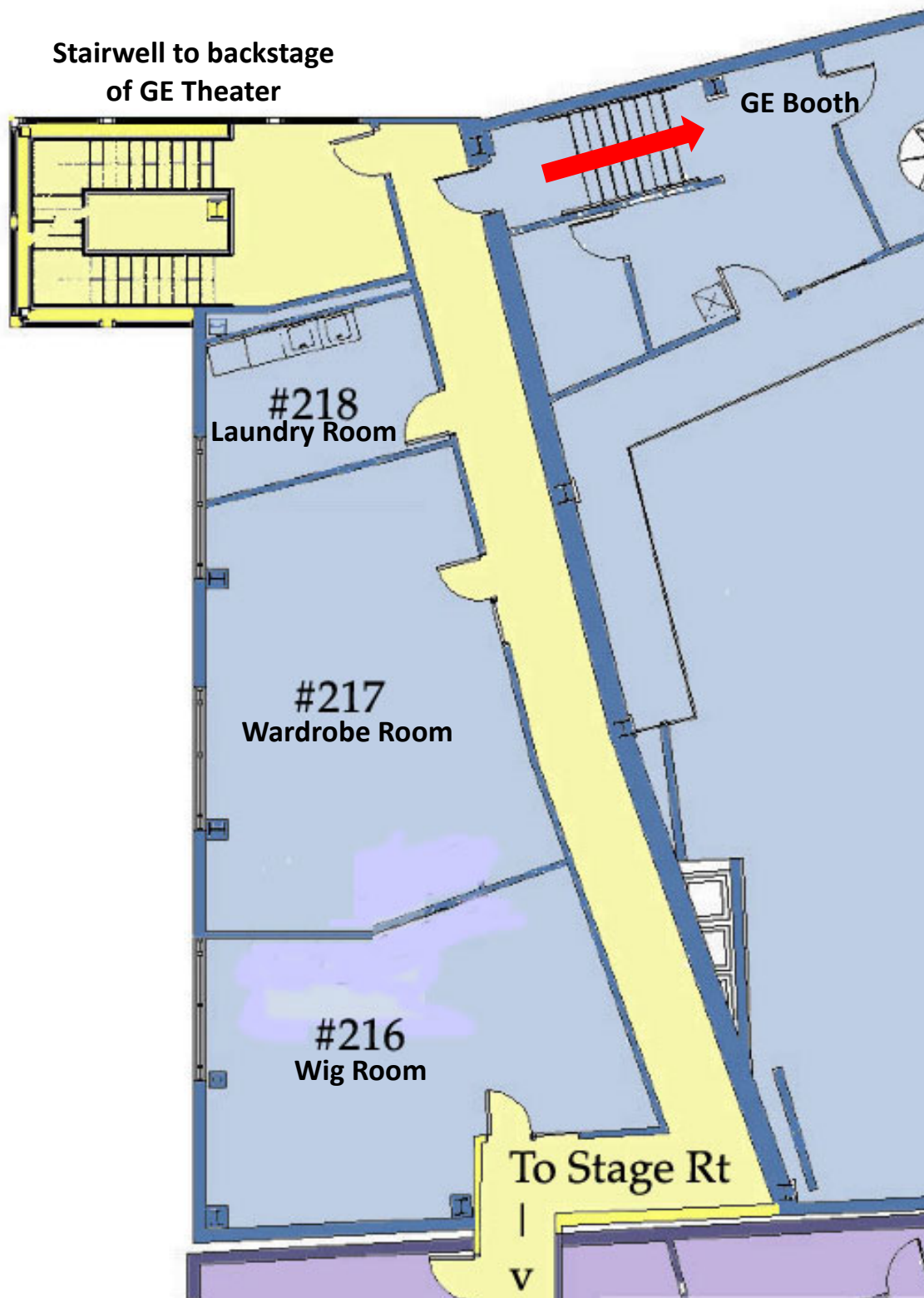
3	Washing Machines	*Subject to availability
3	Dryers	*Subject to availability
1	Streamers	

### **Dressing Room Descriptions**

Room 126	Green Room/ Dressing Room. Approximately 24' x 18', containing a sink, rolling bar, 2 bar stools, couch, armchair, coffee table, and small shelving unit. The Baldwin piano resides here when not onstage.
Room 128	Dressing Room, approximately 18' x 12'. Contains a sink, 4 make-up stations, and wardrobe rack.
Room 129	Single restroom with a sink and toilet.
Room 130	Single restroom with a sink and toilet.
Room 131	Dressing Room, approximately 16' x 15'. Contains a sink, 6 make-up stations, and wardrobe rack.







**GENERAL SCHENECTADY INFORMATION - Visit [discoverschenectady.com](http://discoverschenectady.com) for more!**

**EMERGENCY**

Schenectady Police Dept.	531 Liberty St.	(518) 382-5200
Schenectady Fire Dept.	360 Veeder Ave	(518) 382-5141

**MEDICAL**

**Hospital**

Ellis Hospital	1101 Nott St	
	Admitting	(518) 382-4369
	Emergency	(518) 382-4121

**Urgent Care**

Ellis Medicine	200 Harborside Dr.	(518) 881-4700
EmUrgent Care	115 Saratoga Rd., Glenville	(518) 264-2900

**General Practice**

Robert J. Donohue Jr.	1201 Nott St., Suite 102	(518) 382-7503
-----------------------	--------------------------	----------------

**Orthopedist**

Richard D'Ascoli	530 Liberty St.	(518) 382-7200
------------------	-----------------	----------------

**Ear, Nose, and Throat**

Capitol Otolaryngology	Stuyvesant Plaza, Albany	(518) 482-9111
------------------------	--------------------------	----------------

**Dentist**

Dr. Liebers (24hr on call)	1070 Nott St.	(518) 374-4118
David Coppola	34 Vley Rd., Scotia	(518) 370-5038

**Chiropractors**

Tim Mags	1462 Erie Blvd.	(518) 393-6566
David Civale	1 Swaggertown Rd., Scotia	(518) 377-2207
David Cerniglia	25 Mohawk Ave, Scotia	(518) 374-8039

**Massage Therapy**

Physical Therapy Assoc.	1533 Union St	(518) 382-9166
-------------------------	---------------	----------------

**Podiatrist**

R. Di Caprio Jr.	1354 Union St.	(518) 370-4331
------------------	----------------	----------------

**OB/GYN**

Women's Health Care	1202 Troy-Schenectady Rd.	(518) 220-9393
	Latham, NY	
Planned Parenthood	1040 State St.	(518) 374-5353

**Pharmacy**

CVS Pharmacy	1204 Eastern Ave	(518) 372-4479
--------------	------------------	----------------

**FITNESS/GYM AND YOGA STUDIOS**

YMCA	433 State St.	(518) 881-0117
I Am Fitness	237 State St.	(518) 653-7506
Studio 4 Yoga & Pilates	151 Lafayette St. <a href="http://www.studio4hotyoga.com">www.studio4hotyoga.com</a>	(518) 280-9139
Yoga Bliss	140 Erie Blvd. <a href="http://www.yogabliss.com">www.yogabliss.com</a>	(518) 894-7086

**DANCE STUDIO**

Meyers Dance Studio	418 Liberty St.	(518) 374-0376
---------------------	-----------------	----------------

**BANKS**

Key Bank	315 State St.	(518) 381-5000
Bank of America	500 State St.	(800) 432-1000
NBT Bank	433 State St.	(518) 381-4521

\*There is an ATM in the Box Office Lobby

**POST OFFICE**

Schenectady Branch	29 Jay St. M-F 8:30am-5:00pm Sat. 9:00am-12:00pm	(518) 395-5400
UPS Drop-off Site	1737 Union St. M-F 9:00am-5:00pm	

**HOTELS**

The Parker Inn	434 State St.	(518) 688-1001
Hampton Inn	450 State St.	(518) 377-4500
Double Tree by Hilton	100 Nott Terrace	(518) 393-4141
The Landing	21 Rush St.	(518) 579-8840
Courtyard by Marriott	240 Harborside Dr.	(518) 579-6620
Homewood Inn and Suites	2A Freeman's Bridge	(518) 579-6727
Comfort Inn	168 Sacandaga Rd (3 miles Away)	(518) 348-6048
The Desmond	660 Albany Shaker Rd., Albany (15 miles away)	(518) 869-8100

\*Our area also has a very active Airbnb presence in the nearby historic stockade district.

**GROCERY STORES**

Market 32	1640 Eastern Pkwy	(518) 372-6553
Stockade Market	33 State St.	(518) 630-5398
Arthur's Market	35 N Ferry St	(518) 709-0019
Alltown Fresh (small sel.)	1410-1424 Erie Blvd.	(518) 557-4953

\*Local Farmers Market occurs Sun. 10-2 at 105 Jay St. and in the theater's arcade in the winter.

**CATERERS**

Homestyle Caterers	268 Saratoga Rd., Scotia	(518) 701-4501
--------------------	--------------------------	----------------



## **PRODUCTION RESOURCES**

Bellevue Building Supply	500 Duaneburg Rd.	(518) 355-7190
Lowes	93 Freemans Bridge	(518) 952-8789
Home Depot	2500 Cambridge Rd.	(518) 388-9121
Metal Supermarkets	1054 Broadway, Albany	(518) 435-0024
High Peaks Event Prod.	4272 NY-50, Saratoga	(518) 222-0151
Staples	24 Maxwell Dr., Clifton Park	(518) 371-1482
Sally Beauty	1453 Altamont Ave	(518) 355-8381

## **LAUNDRY/DRY CLEANING**

Empire Laundromat	561 Nott St.	(518) 344-4939
Best Cleaners	809 State St.	(518) 458-2378

## **TRANSPORTATION AND PARKING**

Premiere Transportation	456 North Pearl St., Albany	(518) 459-6123
LAZ Parking Garage	220 Broadway	(518) 346-0614

## **PHONE LINES**

Proctors has six phone lines backstage that incoming productions can use. They are all patchable to dressing rooms and all production areas. The use of these lines is charged at a flat rate.

Phone numbers are assignable. Available numbers are:	(518) 881-1824
	(518) 881-1825
	(518) 881-1826
	(518) 881-1827
	(518) 881-1828
	(518) 881-1829

## **FOOD AND DRINK**

### **Restaurants**

Taj Mahal	820 Eastern Ave	(518) 370-3664
Moon and River Café	115 S Ferry St.	(518) 382-1938
Pizza King	124 Jay St.	(518) 347-1234
Backstage Pub	501 Smith St.	(518) 709-0104
Pho Queen	96 Jay St.	(518) 579-0466
The Nest	512 State St.	(518) 672-3018
The Whistling Kettle	138 Jay St.	(518) 630-6933
Zen Asian Fusion	469 State St.	(518) 280-038
151 Bar and Grill	151 LaFayette St.	(518) 280-7841
Annabel's Pizza Co.	108 State St.	(518) 553-0400
Bountiful Bread	108 State St.	(518) 387-9997
Johnnys	433 State St.	(518) 982-5657
Ambition Coffee & Eatery	154 Jay St.	(518) 382-9277
Tara Kitchen	431 Liberty St.	(518) 708-3485
Take Two Café	433 State St.	(518) 280-9670

**Bars and Breweries**

Katie O'Byrnes	121 Wall St.	(518) 395-5999
Manhattan Exchange	607 Union St	(518) 280-9987
Wolff's Biergarten	165 Erie Blvd	(518) 631-9517
Shaker and Vine	221 Harborside Dr	(518) 630-6318
Frog Alley Brewing	108 State St	(518) 631-4800
20 North Tavern	20 North Broadway	(518) 357-8992
Center Street Pub	308 Union St.	(518) 393-2337
Clinton's Ditch	112 S College St.	(518) 346-8376
Druthers	221 Harborside Dr.	(518) 357-8028

**Bakeries**

Smash Heart Box	435 Liberty St	(518) 698-1894
Perrecca's Bakery	33 N Jay St	(518) 372-1875
Villa Italia	226 Broadway	(518) 355-1144

**Coffee**

Buds on Jay	185 Jay St	(518) 952-4466
Stewarts	1033 Erie Blvd.	(518) 377-6951
Alltown Fresh	1410 Erie Blvd	(518) 557-4953

**LOCAL ACTIVITIES**

Rivers Casino	1 Rush St.	(518) 579-8800
MiSci Science Museum	15 Museum Dr.	(518) 382-7890
Central Park & Rose Garden	500 Iroquois Path	(518) 382-5151
MopCo Improv	10 N Jay St.	(518) 577-6726
Bowtie Cinemas	400 State St.	(518) 372-7500

Production Manager (Adv. Contact)	Drew VanGenderen	(518)475-8942
Technical Director	James Petersen	(518)382-3884 Ext. 132