

# PROCTORS

COME  
FROM  
AWAY

TRUE STORY. HIT MUSICAL.

# Supporting each other has never been more important

Together, we build thriving  
communities based in understanding  
and advocating for tolerance.



Combat  
antisemitism  
and hate  
in our  
community



Comfort and  
shelter the  
vulnerable



Secure  
the Jewish  
future



**Jewish Federation**  
of Northeastern New York

[jewishfedny.org](http://jewishfedny.org)

**Life & Legacy**  
ASSURE JEWISH TOMORROWS



# BEST SUPPORTING ACTOR

FORD EXPLORER®



There's no better supporting actor for you and your crew than the Ford Explorer® SUV. With seating for up to seven, loaded with high-tech features and luxurious accommodations, it's no wonder Explorer® is the best-selling SUV of all time.



Official Sponsor of Proctors  
[BuyFordNow.com](http://BuyFordNow.com)

\*Based on S&P Global Mobility 1946-Current US Total New Cumulative Registrations, for all vehicles identified as SUVs.



Dear Neighbors and Visitors,  
Welcome to Schenectady County,  
the home of Proctors.

Schenectady County is an ever-evolving center for arts and entertainment. A must visit destination where arts, culture, and innovation come together!

From captivating theatre & Broadway musicals, live music & vibrant street festivals to immersive national exhibits, and more! There is something for everyone to explore.

It all began with a bold vision. Our County Legislature saw the potential in Proctors 20 years ago and helped it grow, bringing life back to Downtown Schenectady. We remain committed to supporting Proctors, ensuring it remains a vital hub for arts and culture in the Capital Region & beyond.

Discover all that Schenectady County has to offer at [DiscoverSchenectady.com](http://DiscoverSchenectady.com).

**Hon. Gary Hughes - Chairman  
Schenectady County Legislature**



SRG looks forward to  
a continuing creative  
partnership with  
**PROCTORS.**



**SRG**  
STRACHER ROTH GILMORE  
ARCHITECTS  
143 Jay St., Schenectady, NY 12305  
518-374-9412 Fax 518-374-4049

## Helping generations achieve their goals.

**You've worked hard to achieve success.  
Call us today and discover the personal service you deserve.**

### Inspire Confidence Group

A private wealth advisory practice of  
Ameriprise Financial Services, LLC

★★★★★ Client Satisfaction Rating

80 Wolf Road, 1st Floor,  
Albany, NY 12205  
518.459.5500  
[www.inspireconfidencegroup.com](http://www.inspireconfidencegroup.com)  
[inspireconfidencegroup@ampf.com](mailto:inspireconfidencegroup@ampf.com)



**INSPIRE CONFIDENCE GROUP™**

Powered by Ameriprise  
Financial

Not FDIC or NCUA Insured | No Financial Institution Guarantee | May Lose Value

4.9 out of 5 Client Satisfaction Rating based on 120 of reviews as of 4/12/2023. Each client has the opportunity to rate a practice based on the client's overall satisfaction with the practice, on a scale of 1 to 5. The practice's Client Satisfaction Rating is an average of all client responses for that practice within a rolling 24-month period, and is updated daily. There is no minimum number of responses required for a practice to receive a rating. Investment advisory products and services are made available through Ameriprise Financial Services, LLC, a registered investment adviser. Ameriprise Financial Services, LLC. Member FINRA and SIPC. © 2023 Ameriprise Financial, Inc. All rights reserved. 5608454ACMR0423





# Everyone's Our MVP

---

See how MVP treats you like  
our Most Valuable Person.  
Take a closer look at your  
health coverage options today.

Visit **[mvphealthcare.com](http://mvphealthcare.com)** or  
call **1-800-TALK-MVP**.

Health benefit plans are issued or administered by MVP Health Plan, Inc.; MVP Health Insurance Company; MVP Select Care, Inc.; and MVP Health Services Corp., operating subsidiaries of MVP Health Care, Inc. Not all plans available in all states and counties.

# Local theatre that hits all the right notes

Food nourishes the body, but the arts nourish the soul. At Price Chopper and Market 32, we're long-time supporters of the performing arts community in the Capital Region. We're proud of our enduring partnership with Proctors through sponsorship, major gifts and Golub family support.



# TAKE YOUR SEAT PROCTORS

## EMERGENCY EXITS

On each side of the theatre, as well as the main exit. Please note the nearest exit to you in the event of an emergency.

## RESTROOMS

In the back of the orchestra level and in the balcony (Ladies – house left, Mens – house right). Additional restrooms are located in the Arcade (second level) and near the Box Office. Family restroom located near the Box Office. Changing tables can be found in the balcony ladies room as well as the Family restroom.

## BOX OFFICE

Off Proctors Arcade – open until curtain.

## VIP LOUNGE IN THE FENIMORE ASSET MANAGEMENT GALLERY

On the second level of Robb Alley.

## ELEVATORS/STAIRS

Near theatre entrance doors.

## CANDY COUNTER & BEVERAGE BARS

Located throughout the theatre, in the Arcade entrance of the theatre and at Apostrophe Café.

## CHILD POLICY

All children, regardless of age, must have a ticket.

## BOOSTER SEATS

Limited number are available at the Candy Counter. Most car booster seats work well.

## HEARING ENHANCEMENT

Receivers are available at the Box Office.

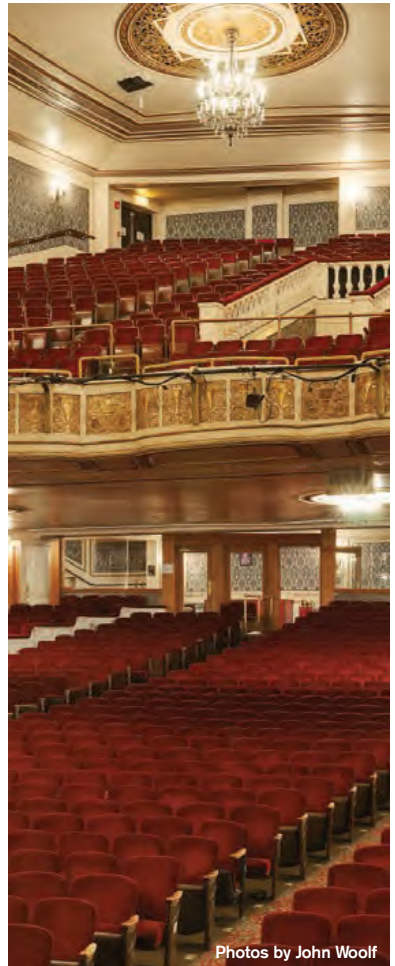
## CREDIT CARDS

Accepted at all of our bars and concession stands.

## AS A COURTESY TO ALL OF OUR GUESTS & PERFORMERS:

- Please turn off all cell phones and pagers and refrain from texting or talking during the show.
- Please open all noisy candy wrappers before the curtain goes up
- Please remove hats or anything else that may obscure the view of another patron.
- Smoking is not permitted anywhere inside the building.
- Use of cameras or video equipment is strictly prohibited.

## IF YOU ARE IN NEED OF ASSISTANCE AT ANY TIME DURING THE PERFORMANCE, PLEASE SEE ONE OF OUR USHERS.



## THE BELLEVUE WOMAN'S CENTER LACTATION LOUNGE

Nursing mothers may access this room inside the balcony Ladies Lounge.

## RECYCLING

Please recycle your playbill at the recycling receptacles located around the theatre.

# FIND YOUR WAY at PROCTORS

Proctors Board Room

SECOND FLOOR

Proctors Office Reception

Taylor Made Group Room

Fenimore Asset  
Management Gallery

Albany International  
Room

Delack Guild Room

Bellevue Woman's Center  
Lactation Lounge

Mezzanine

Balcony Seating

Apostrophe Café & Lounge

State Street entrance

Schenectady Visitors Center

Hearst Education Center

Box Office

Robb Alley

Key Hall

Key Hall Entrance

Wright Family Atrium

Gift Centre

GE Theatre

The Golub  
Family Arcade

MainStage Bar

Concessions

MainStage

Stratton Plaza  
entrance

Harry Apkarian Stage

FIRST FLOOR

# FIND YOUR WAY PROCTORS



## The Addy

The Adeline Graham Theatrical Training and Innovation Center (The Addy) is the new creative space on the 3rd floor of Proctors where students are nurtured, challenged and encouraged to explore, create, experiment and take risks in order to grow at their own pace. The 12,000-square foot center includes a black box theatre and small and large rehearsal spaces, and is home to the Empire State Youth Orchestra's CHIME program. For more information, visit [school.proctors.org/the-adeline-graham/](http://school.proctors.org/the-adeline-graham/) The quality of instruction and training you have come to expect from Proctors decades-long legacy will be delivered here.



*& Italian Specialties*

*Not Your Average  
Italian Deli!*

**(518) 280-0440**

*Large selection of  
grab & go items*

[surianosdeli@gmail.com](mailto:surianosdeli@gmail.com)  
[www.surianosdeli.com](http://www.surianosdeli.com)

**140 B Clinton Street • Schenectady, NY 12305**



**FOR EVERY STAGE OF YOUR LIFE**

CIOFFI • SLEZAK • WILDGRUBE P.C.

ATTORNEYS AND COUNSELORS AT LAW

Estate Planning, Elder Law, Estate and Trust Administration,  
Real Estate, Business Law

1473 ERIE BOULEVARD, 1ST FLOOR | SCHENECTADY, NY  
518.377.6700 | [WWW.CSWLAWFIRM.COM](http://WWW.CSWLAWFIRM.COM)

A woman with blonde hair, smiling, is positioned on the right side of the advertisement. Behind her is a large graphic of the Access Compliance logo, which includes a stylized 'A' made of four colored diamonds (red, yellow, blue, green). The text 'Access compliance' is written in a sans-serif font. Below the logo, the phone number '800-732-8004' and the website 'ACCESSCOMPLIANCE.NET' are listed. At the bottom of the graphic, it says 'Human Owned' next to a small American flag icon and 'Veteran Owned'.

**A Strong Safety & Health System Reduces Workplace Injuries and Illnesses**

**Providing solutions for all your safety, training  
and compliance needs.**

**[WWW.ACCESSCOMPLIANCE.NET](http://WWW.ACCESSCOMPLIANCE.NET)**

# THE AUDIOLOGY CENTER

Comprehensive  
Hearing Healthcare

•  
State-of-the-Art  
Digital Hearing Aids



DR. LAURA BRODSKY  
*Audiologist*

6 Wellness Way Ste. G10  
Latham, NY 12110

(518) 785-6566



DR. LILITH BRODSKY  
*Audiologist*

**COMMUNITY  
CARE**  
PHYSICIANS

Accepting All Major Insurances

[COMMUNITYCARE.COM/AUDIOLOGY](https://www.communitycare.com/audioLOGY)



Since 1955

# HARBROOK

Fine Windows, Doors & Hardware  
Design Gallery



## MARVIN



47 Railroad Avenue  
Albany, NY 12205  
[www.harbrook.com](http://www.harbrook.com)

(518) 437-0016  
(800) 735-1427

Explore

**DOWNTOWN  
SCHENECTADY**

DINING



SHOPPING



ENTERTAINMENT



EVENTS



**DOWNTOWN  
SCHENECTADY**  
IMPROVEMENT CORP.

Follow us on:



Visit us at: [downtownschenectady.org](http://downtownschenectady.org)

## Schenectady Greenmarket

The best-tasting and freshest produce

*Always seasonal.*

direct from our farmers and makers.

*Always local.*

Sundays 10 am-2 pm



[SchenectadyGreenmarket.com](http://SchenectadyGreenmarket.com)



# BEST CLEANERS

BestCleanersNY.com

**ALL THE  
WORLD'S  
A STAGE**

*And you'll be the  
star of the show  
in a wardrobe  
maintained by  
Best Cleaners.*

*Supporting the arts as official cleaner for* Proctors • theREP • UPH

*We want to say thanks to everyone for 10 years of patronage  
& we are still changing lives one curl at a time!*

**RONALD SURIANO II**  
*Owner & Curl Specialist  
International Curl Educator*



**BROOKE IRENA**  
*Curl Stylist*

518.925.8136 • WWW.MOISTURESALON.COM

140A CLINTON STREET • SCHENECTADY, NY 12305 *Formerly at 158 Barrett St.*

## Katie O'Byrnes Restaurant

518-395-5999



Open Monday - Sunday for Lunch and Dinner

Happy Hour - Monday - Friday 3 - 6pm

Banquet Room Available

Katieobyrnepub.com



**121 WALL STREET, (CORNER OF ERIE BLVD & STATE STREET)  
SCHENECTADY, NY 12305**



*The Face of Experience*

**Personal Injury  
Workers' Compensation Law  
Social Security Disability**



**Contact Us**

**Call 518-449-3107  
for a free consultation  
[bmcqlaw.com](http://bmcqlaw.com)**



*Supporting the Arts  
for over 50 Years!*

**The Open Door  
Bookstore & Gift Gallery**

*A Locally-Owned Independent Bookstore Since 1971*

128 JAY STREET • SCHENECTADY • (518) 346-2719  
[www.opendoor-bookstore.com](http://www.opendoor-bookstore.com)

**Gershon's**  
**Deli & Catering**



*A Union Street Tradition for More Than 60 Years!*

1600 Union Street  
Schenectady, NY 12309  
518.393.0617  
[www.gershonsdeli.com](http://www.gershonsdeli.com)

## Making Your Schenectady Stay Memorable!



@dtschenectady

- Located within walking distance to Proctors Theatre
- Dine at Sammy's® Burger & Bistro serving delicious American Cuisine
- Modern full service hotel featuring comfortable and stylish guest rooms or suites with modern amenities
- Host meetings, events and weddings in our state of the art facility
- Enjoy our indoor salt water pool and modern 24-hour fitness center
- Close to popular attractions including Union College, Saratoga Springs and Cooperstown Baseball Hall of Fame

100 Nott Terrace | (518) 393-4141  
[schenectady.doubletree.com](http://schenectady.doubletree.com)



@HamptonInnSchenectady

- Just 300 feet from the entrance to Proctors Theatre in the heart of a vibrant downtown
- Enjoy our large complimentary hot breakfast buffet
- Free high-speed internet access in every room
- Electric car charging stations
- Indoor pool, hot tub and gym/fitness center
- Short drive to Saratoga Springs and the Saratoga Race Course
- 100% Hampton Guarantee!

450 State Street | (518) 377-4500  
[schenectady.hamptoninn.com](http://schenectady.hamptoninn.com)

UNICORN • COLONIAL • PLAYHOUSE

# BERKSHIRE THEATRE GROUP

**"Western MA explodes  
with the arts every  
summer and BTG is  
vital to that scene"**

*The New York Times*



The Colonial Theatre  
111 South Street, Pittsfield, MA

The Unicorn Theatre  
6 East Street, Stockbridge, MA



(413) 997-4444

[www.BerkshireTheatreGroup.org](http://www.BerkshireTheatreGroup.org)

Photo by David Dashiell.

## ne northeast Ballet company

The center of Dance  
in the Capital Region

training • performances  
resident ballet company at PROCTORS

[northeastballet.org](http://northeastballet.org) • 518-374-0376



*In tune* with you.

The arts create a bridge that connects our community. At **1st National**, we're proud to play a part in supporting our local talent.



## THE RITZ HOME STYLE ON UNION PIZZA



1720 Union St, Schenectady, NY

## Q.U.I.L.T.S.

Quilters United In Learning Together, Schenectady



Join us for our next  
Q.U.I.L.T.S. Show  
at Proctors.

Visit us online for more information:

[quiltschenectady.org](http://quiltschenectady.org)

[facebook.com/quiltschenectady](https://facebook.com/quiltschenectady)



U·P·P·E·R  
UNION  
ST·R·E·E·T  
SCHENECTADY

Fine Shopping, Dining, & Services  
[www.upperunionstreet.com](http://www.upperunionstreet.com)



# Audiologic Solutions



## Don't let **Hearing Loss** have a negative impact on tonight's performance.

We provide personalized hearing healthcare, ensuring your unique hearing needs are met with precision and empathy.

Enjoy  
peak  
performance  
from our  
talented  
team



Stefan Fosco  
AuD



Erin Walborn-  
Sterantino, AuD



Angela Lalla  
AuD



Karen DeJoy  
AuD



Tammy Monroe  
AuD



Lyndsay  
Cunningham, AuD

### ***TO SUPPORT THE ARTS...***

Scan the QR code to make an appointment and register to win a \$200 Proctors gift card for a future performance.



**Our spotlight is always focused on your quality of life.**

3 convenient locations: Queensbury, Rensselaer, Hudson

*Call to schedule your personal consultation*

**518.283.6111 • GreatHearingCare.com**

NETworks Presentations

Presents

# COME FROM AWAY

TRUE STORY. HIT MUSICAL.

Book, Music and Lyrics by

IRENE SANKOFF and DAVID HEIN

Featuring

JOHN ANKER BOW   KATHLEEN CAMERON   RYAAN FARHADI   RICHARD CHAZ GOMEZ  
JORDAN HAYAKAWA   ANDREW HENDRICK   KAITLYN JACKSON   KRISTIN LITZENBERG  
TYLER OLSHANSKY-BAILON   ERICH SCHROEDER   HANNAH-KATHRYN WALL   ANDRE WILLIAMS  
NICK BERKE   K. BERNICE   JORDAN DIGGORY   BROOKE MELTON   SIERRA NAOMI   JUSTIN PHILLIPS

Scenic Design

BEOWULF BORITT

Costume Design

TONI-LESLIE JAMES

Lighting Design

HOWELL BINKLEY

Sound Design

GARETH OWEN

Associate Lighting Design

RYAN O'GARA

Hair Design

DAVID BRIAN BROWN

Orchestrations

AUGUST ERIKSMOEN

Arrangements

IAN EISENDRATH

Associate Music Supervisor

WENDY BOBBITT CAVETT

Music Coordinator

JOHN MEZZIO

Casting

THE TELSEY OFFICE  
Rachel Hoffman, C.S.A.

Tour Booking Agency

THE BOOKING GROUP  
Meredith Blair

Digital Marketing and Advertising

ARTHOUSE

Tour Press and Marketing

ANITA DLONIAK  
MELISSA A. HAZEK

Music Director

SARAH POOL WILHELM

Company Manager

MACKENZIE DOUGLAS

Production Stage Manager

SAM KRONHAUS

General Management

GENTRY & ASSOCIATES  
Steven Varon-Moore

Executive Producer

MIMI INTAGLIATA

Production Management

NETWORKS PRESENTATIONS  
Alex Williams

MUSIC SUPERVISION

IAN EISENDRATH

MUSICAL STAGING BY

KELLY DEVINE

DIRECTION RESTAGED BY

DANIEL GOLDSTEIN

MUSICAL STAGING RESTAGED BY

RICHARD J. HINDS

DIRECTED BY

CHRISTOPHER ASHLEY

*Come From Away* was originally co-produced in 2015 by La Jolla Playhouse and Seattle Repertory Theatre and presented in 2016 by Ford's Theatre  
*Come From Away* (NAMT Festival 2015) was originally developed at the Canadian Music Theatre Project, Michael Rubinoff—Producer, Sheridan College in Oakville, Ontario, Canada  
and was further developed at Goodspeed Musicals' Festival of New Artists, in East Haddam, Connecticut.

The Canada Council for the Arts, the Ontario Arts Council and the 5th Avenue Theatre, Seattle, Washington, also provided development support.

---

# CAST

(in order of appearance)

Bonnie and others .....	KATHLEEN CAMERON
Oz and others .....	ERICH SCHROEDER
Beverley/Annette and others .....	KAITLYN JACKSON
Janice and others .....	JORDAN HAYAKAWA
Bob and others .....	ANDRE WILLIAMS
Claude and others .....	ANDREW HENDRICK
Kevin T./Garth and others .....	RICHARD CHAZ GOMEZ
Nick/Doug and others .....	JOHN ANKER BOW
Kevin J./Ali and others .....	RYAAN FARHADI
Hannah and others .....	HANNAH-KATHRYN WALL
Beulah and others .....	KRISTIN LITZENBERG
Diane and others .....	TYLER OLSHANSKY-BAILON

## STANDBYS

*Standbys never substitute for the listed performers  
unless a specific announcement is made at the time of the performance.*

Janice, Hannah, Bonnie, Beverley—K. BERNICE  
Beverley, Diane, Beulah, Hannah—BROOKE MELTON  
Beulah, Bonnie, Janice, Diane—SIERRA NAOMI  
Claude, Nick, Kevin J., Bob—JORDAN DIGGORY  
Bob, Kevin J., Kevin T., Oz—JUSTIN PHILLIPS  
Kevin T., Oz, Nick, Claude—NICK BERKE

## DANCE CAPTAIN

NICK BERKE

TO VIEW THE CAST LIST FOR THIS PERFORMANCE, SCAN THE QR CODE BELOW:





JOHN ANKER  
BOW



KATHLEEN  
CAMERON



RYAAN  
FARHADI



RICHARD CHAZ  
GOMEZ



JORDAN  
HAYAKAWA



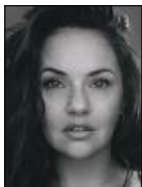
ANDREW  
HENDRICK



KAITLYN  
JACKSON



KRISTIN  
LITZENBERG



TYLER  
OLSHANSKY-BAILON



ERICH  
SCHROEDER



HANNAH-KATHRYN  
WALL



ANDRE  
WILLIAMS



NICK  
BERKE



K.  
BERNICE



JORDAN  
DIGGORY



BROOKE  
MELTON



SIERRA  
NAOMI



JUSTIN  
PHILLIPS

---



---

# MUSICAL NUMBERS

"Welcome to the Rock" .....	Company
"38 Planes" .....	Company
"Blankets and Bedding" .....	Company
"28 Hours/Wherever We Are"* .....	Company
"Darkness and Trees" .....	Company
"Costume Party" .....	Diane, Hannah, Kevin T., Kevin J., Company
"I Am Here" .....	Hannah
"Prayer"*** .....	Kevin T., Company
"On the Edge" .....	Company
"Screech In"* .....	Claude, Company
"Me and the Sky" .....	Beverly, Female Company
"Stop the World" .....	Nick, Diane, Company
"Somewhere in the Middle of Nowhere" .....	Company
"Something's Missing" .....	Company
"Finale" .....	Company

COME FROM AWAY WILL BE PERFORMED WITHOUT AN INTERMISSION.

## THE BAND

*Conductor/Keyboard/Accordion/Harmonium*—SARAH POOL WILHELM

*Whistles/Irish Flute/Uilleann Pipes*—LOGAN MITCHELL

*Fiddle*—GIOIA GEDICKS

*Electric/Acoustic Guitars*—MATT KAHN

*Acoustic Guitar/Mandolins/Bouzouki*—McKINLEY FOSTER

*Electric/Acoustic Bass*—ISAAH SMITH

*Bodhran/Percussion*—SPENCER INCH

*Drums/Percussion*—BRANDON WONG

*Music Director*—SARAH POOL WILHELM

*Associate Music Director*—BRONWEN CHAN

*Music Coordinator*—JOHN MEZZIO

*Electronic Music Design*—Billy Jay Stein, Jason Howland, Hiro Iida and Adam Wiggins for

Strange Cranium Productions, Inc.

*Music Preparation*—ZACH REDLER, RYAN DRISCOLL

\*"My Heart Will Go On" words and music by Will Jennings and James Horner. ©IRVING MUSIC, INC. on behalf of BLUE SKY RIDER SONGS (BMI). Used by permission of Sony/ATV Music Publishing. All rights reserved.

\*\*\*"Prayer of St. Francis" dedicated to Mrs. Frances Tracy. ©1967, OCP, 5536 NE Hassalo, Portland, OR 97213.

All rights reserved. \*\*\*"Oseh Shalom" written by Nurit Hirsh. ©1972, Nurit Hirsh. All rights reserved

Please be aware that a camera flash effect will be in use at this performance.

---

# WHO'S WHO IN THE CAST

**JOHN ANKER BOW** (*Nick and Others*). Graduate of Rider University. Tours: *Cats* (Gus Bustopher), *Kinky Boots* (George), *Ragtime* (Henry Ford), *A Christmas Carol* (Jacob Marley) & Disney Cruise Line. Regional: *Les Misérables* (Thénardier), *Spamalot* (Arthur), *The Drowsy Chaperone* (Man in Chair), *Damn Yankees* (Applegate), *Spring Awakening* (Adult Man), *Noises Off!* (Lloyd). John is a voiceover artist for Little Fox Productions and co-host of the Flop of the Heap podcast. Hudson Artists Agency, NYC.

**KATHLEEN CAMERON** (*Bonnie and Others*) is thrilled to be a part of *Come From Away*. A musical theater performer and sketch comedy writer, her work has appeared on *Characters Welcome* and at the Upright Citizens Brigade Theater. She is a proud graduate of NYU Tisch Drama. Many thanks to the entire CFA team! Her performance is dedicated to her favo(u)rite Canadian, Jim. @kathleengcameron | KathleenCameron.com

**RYAAN FARHADI** (*Kevin J. / Ali and Others*). National Tour: Lincoln Center's *My Fair Lady*. Regional: *Hunchback of Notre Dame* (The REV), Orin Scrivello in *Little Shop of Horrors*. Love to his PMA team and to his mother, father and sister for their support. Clown of Penn State MT23. Proud Iranian and Afghan American. Follow along @ryaanfarhadi

**RICHARD CHAZ GOMEZ** (*Kevin T. / Garth and Others*) is thrilled to join the company of *Come From Away*! BFA: Abilene Christian University. National Tour: *How the Grinch Stole Christmas* (Buzz, u/s Grinch). Regional: *His Story the Musical* (Judas), *Kinky Boots* (Don), *Wizard of Oz* (Lion), *The Little Mermaid* (King Triton), *The Prom* (Trent Oliver), *South Pacific* (Luther Billis). Thanks to Rachel Hoffman. "All my love to Ma, Hallie, Bubba, Bits, and the fRamily for being my safe space." dolores patria. @richardchazgomez

**JORDAN HAYAKAWA** (*Janice and Others*) (they/them) is thrilled to be making their National Tour debut in *Come From Away*. Regional credits: *Rock of Ages* (Regina), *Hold These Truths* (u/s Gordon) at Hope Repertory Theatre. Ithaca College BFA Musical Theatre Class of '24. Thank you to UIA Talent Agency and to their family and friends for their endless love and support. Big feelings. @kaleidoscopic.\_kazuko / jordanhayakawa.com

**ANDREW HENDRICK** (*Claude and Others*) is thrilled to be a part of this incredible show. While touring for the past 10 years, Andrew has performed in all 50 US states as well as Canada, The Bahamas, China and Singapore. National tour credits include nearly 600 performances of *Fiddler On The Roof* (Lazar Wolf), *Kinky Boots*, *Bullets Over Broadway* (1st Nat'l), *Jekyll & Hyde*. Andrew is a co-producer of the popular musical *Be More Chill* (Bway & West End) and *The Secret Garden* (Los Angeles revival). Thanks to the CFA creative team, NETworks, Rachel Hoffman/Telsey and

Co, About Artists Agency. For Dad, whom I am eternally grateful came home from work that day. @andrewbhendrick

**KAITLYN JACKSON** (*Beverley and Others*) is an avid actor, singer, dancer, and choreographer, and is thrilled to be joining the cast of *Come From Away*. Ithaca College graduate (B.F.A. Acting), Stage Combat Certification from the British Academy of Stage and Screen Combat. Credits: *Frozen* (Elsa), Regional Premiere Tuacahn Center for the Arts; *Anastasia* North American tour (Tsarina, u/s Countess Lily); *Beautiful: The Carole King Musical* (Carole King), Titusville Playhouse. Kaitlyn-Jackson.com

**KRISTIN LITZENBERG** (*Beulah and Others*). National/International tour: *Sister Act*. Regional: *Escape to Margaritaville* (Arizona Broadway Theatre), *The Sound of Music* (Gateway Playhouse). Kristin holds a BFA from AMDA College of the Performing Arts. Many thanks to Rachel Hoffman and the CFA team. Love to my husband, Kevin, my family, and the cats! @kristinlitz

**TYLER OLSHANSKY-BAILON** (*Diane and Others*) is honored to be making her national tour debut and to get to tell this wonderful story! Recent credits: *An Evening with Sir Tim Rice* (Diva track), *Les Misérables* (Eponine), *Man of La Mancha* (Antonia), *Rent* (Ensemble/Maureen cover). Off Broadway: *Exorcistic: The Unauthorized Musical Parody* (The Diva). Huge thanks to my agent, Natalie, and LA Talent, Rachel Hoffman/Telsey & Co, the CFA Team, my sister, Cameron, my incredible husband, Luigi, and my fur son, Beetlejuice. @tyler\_olshansky

**ERICH SCHROEDER** (*Oz and Others*) is so thankful to be here. He is an actor/musician whose credits include *Follies* (Young Buddy), *Rudolph the Red-Nosed Reindeer The Musical* (Santa), *The Spitfire Grill* (Sheriff Joe Sutter) and, most recently, *Once* (Emcee). He would like to thank "The Baby" Natalie Iscovich, his agent Natalie Kollar, and his friends and family for all their support.

**HANNAH-KATHRYN WALL** (*Hannah and Others*) is beaming to be joining this team! National Tour: *Buddy: The Buddy Holly Story* (Marlena Madison). Off-Broadway: *Greatest Hits Down Route 66* (Lead Vocalist). Regional: *Sister Act* (Deloris van Cartier), *The Color Purple* (Nettie), *Heathers* (Veronica Sawyer). All the glory and honor go to God. A huge thank you goes to Mikey & The Collective, her mom for her love & support, her family & friends, & the entire CFA team! Mama, this one's for you, love you! Psalms 91. @hannahkwall | hannahkwall.com

**ANDRE WILLIAMS** (*Bob and Others*) is overjoyed to be making his National tour debut in *Come From Away*! Previous theatre credits: *Joseph and the Amazing Technicolor Dreamcoat* (Joseph), *Sherlock Holmes Returns* (Inspector Lastrade), *The Little Mermaid* (Sebastian). Much love to friends and family for

---

# WHO'S WHO IN THE COMPANY

their constant support, and the entire CFA team. @andreewilliams

**NICK BERKE** (*Standby, Dance Captain*) is thrilled to be back on the road with *Come From Away*. Previous tours: *Fiddler on The Roof* (1st National), *My Fair Lady* (2nd National), and *A Chorus Line* (North America & Japan). Proud NYU/Tisch grad. For more credits and info, visit [nickberke.com](http://nickberke.com). @nickberke

**K. BERNICE** (*Standby*) is excited to make her national tour debut! Regional credits: *Ragtime* (Sarah), *The Color Purple* (Sofia), *Escape to Margaritaville* (Marley), *Footloose* (Ethel McCormack), *Heartbreak County* (Jill). So much love to her children and wonderful team at FSE and DTM. @kbernice / kbernice.com

**JORDAN DIGGORY** (*Standby*) is a Rochester, NY native, a BFA Musical Theatre graduate of the University at Buffalo, and currently resides in Queens, NY. Favorite credits include *Next to Normal* (Dr. Madden), *Bloody Bloody Andrew Jackson* (Martin Van Buren), *Drunk Musicals* (Orin Scrivello DDS, Scuttle, Dr. Scott and MANY more), and a few stints with Royal Caribbean Cruise Lines. Jordan is also a member of the Jewish a cappella group Six13, and in his free time can be found stage diving at your local hardcore venue. Huge thanks to his team of Karen and Tiera at FSE, and Jamie at Baker Entertainment, along with Rachel Hoffman and the folks at Telsey, and the entire *Come From Away* team. Support Local Music, Support Local Artists. [JordanDiggory.com](http://JordanDiggory.com)

**BROOKE MELTON** (*Standby*) is honored to be making her National tour debut with *Come From Away*! Favorite credits include: *Escape to Margaritaville* (Rachel), *Into the Woods* (Baker's Wife), and *Mary Poppins* (Mary Poppins). OCU and NYU alum. Many thanks to the CFA team, Rachel Hoffman/Telsey and Co, Kreativ Artists, and you for supporting live theatre! For Mom and Dad. @brookemariemelt

**SIERRA NAOMI** (*Standby*) is overjoyed to make her national tour debut with *Come From Away* and share this beautiful story! Regional: *Joseph...Dreamcoat* (Narrator), *Sweeney Todd* (Mrs. Lovett), *Les Miserables* (Fantine), *Ragtime* (Emma Goldman), *Into the Woods* (Witch). Television: "King's Blade" (Queen Sigrid). Endless thanks to God, the CFA team, Rachel Hoffman, and Ty-Gabriel Jones! Love to my husband, Matt, and my family. Be a light! @sierranaomi\_nyc

**JUSTIN PHILLIPS** (*Standby*). National Tour credits: *Mean Girls*, *The Book of Mormon*. Select regional credits include: *Dreamgirls*, *The Color Purple* (Phoenix Theater Co.), *Rent* (A.C.T. of CT), *Memphis*, *Ragtime* and *A New Brain*. Voiceover: Audible's *Game On*, *Story Pirates* albums and podcast. Training: William Esper Studio, Lesly Kahn & Co, St. John's University. He thanks God, his family and friends, The Telsey Office, the team at HKA and this incredible company. @jphilzzz

**IRENE SANKOFF & DAVID HEIN** (*Book, Music & Lyrics*) are a Canadian married writing team. They won the 2019 Olivier Award and were nominated for the 2018 Grammy Award and the 2017 Tony Award for their book and score for *Come From Away*, with the show itself winning the 2019 Olivier Award for Best Musical, three 2017 Dora Mavor Moore Awards, four Helen Hayes Awards, five Outer Critics Circle Awards and three Drama Desk Awards, including Best Musical. David and Irene were also the recipients of the 2017 Outer Critics Circle and Drama Desk awards for Best Book. Their first show, *My Mother's Lesbian Jewish Wiccan Wedding* (based on David's mother's true story) was produced by Mirvish Productions in Toronto and played and won best musical awards across North America, with Sankoff and Hein performing in most productions. They are currently working on projects with Disney, Warner Bros. and Netflix. Irene and David are the recipients of the Good Neighbour Award from the Four Freedoms Park Conservancy and the Meritorious Service Cross of Canada. They are proud members of the Dramatists Guild, Writer's Guild East and ASCAP. "Immeasurable thanks to everyone who helped us on this journey and to our extraordinary friends from Away and in Newfoundland for inspiring and trusting us to tell your story." @sankoffandhein

**CHRISTOPHER ASHLEY** (*Director*). Artistic Director, La Jolla Playhouse. Director of the Apple TV+ film of *Come From Away* and the Netflix release of *Diana: The Musical*. Recipient of 2017 Tony, Outer Critics Circle, Craig Noel and Helen Hayes awards; Drama Desk and Dora Award nominations for *Come From Away*. Other Broadway credits include *Diana: The Musical*, *Escape to Margaritaville*, *Memphis* (Tony Award nomination), *Xanadu*, *Leap of Faith*, *All Shook Up*, *The Rocky Horror Show* (Tony Award nomination). West End: *Come From Away* (Olivier Award nomination), *Memphis*. New York: *Blown Sideways Through Life*, *Jeffrey*, *The Most Fabulous Story Ever Told*, *Valhalla*, *Regrets Only*, *Wonder of the World*, *Communicating Doors*, *Bunny Bunny*, *The Night Hank Williams Died*, *Fires in the Mirror* (Lucille Lortel Award). Kennedy Center: *Sweeney Todd*, *Merrily We Roll Along*, *The Lisbon Traviata*. La Jolla Playhouse selected credits: *A Midsummer Night's Dream*, *The Darrell Hammond Project*, *Hollywood*, *His Girl Friday*, *Glenrarry Glen Ross*, *Restoration*. TV/film: *Lucky Stiff*, *Jeffrey*; American Playhouse, PBS: *Blown Sideways through Life*.

**DANIEL GOLDSTEIN** (*Direction Restager*). Broadway: *Godspell*. Off-Broadway: *Tamar of the River*, *Lower Ninth*, *Indoor/Outdoor*. Regional: Huntington, Williamstown, Goodspeed, O'Neill, among others. Japan: *A New Brain*, *Gekido*, *Wizarding World of Harry Potter* (Universal Studios Japan). Writing: *Unknown Soldier* (original cast album available on Ghostlight Records), *Row*,

# WHO'S WHO IN THE COMPANY

*Orange Crush*. 2016 Kleban Prize for Most Promising Librettist. Children: Gracie and Ezra. [danielgoldsteincreative.com](http://danielgoldsteincreative.com)

**KELLY DEVINE** (*Choreographer*). Broadway: *Diana, Come From Away* (Tony, Drama Desk and Outer Critics Circle nominations), *Rocky* (Tony and Drama Desk nominations), *Rock of Ages*, *Dr. Zhivago*, *Escape to Margaritaville*. Off-Broadway: *Rock of Ages*, *Fat Camp*, *Toxic Avenger*. International: *Come From Away* (London, 2019 Olivier Award: Best Choreography), *Glory Ride* (Director, London), *Rocky* (Germany), *Dr. Zhivago* (Australia and Korea), *Rock of Ages* (London, U.K., Toronto and Australia), *Cabaret*, *Romeo and Juliet* (Stratford Shakespeare Festival). Opera: *Faust* (Metropolitan Opera and London ENO), *Wozzeck* (SD Opera). Regional: *Diana*, *Peter and the Starcatcher*, *Come From Away* (La Jolla Playhouse). TV: "Pretty Little Liars", "Katy Keene", "Modern Love", "Mozart in the Jungle", "Wormwood". Film: *Detroit*, *The Upside*, *Happy Texas*. Kelly is the director/choreographer of *Enter the Dragon*, with music by Danny Elfman and a world premiere slated for Las Vegas. Kelly is developing several projects, including a new musical with David Foster.

**RICHARD J. HINDS** (*Musical Staging Restager*). Broadway: *Company*, *Come From Away*, *Newsies*, *Jekyll & Hyde*, *Il Divo: A Musical Affair*. West End: *Elf*, *Come From Away*. Off-Broadway: *Here Lies Love*. National/ U.K. tour: *9 to 5*, *High School Musical*. Regional: La Jolla Playhouse, Old Globe, Kansas City Repertory Theatre, The REV, Gateway Playhouse, Ogunquit Playhouse, Flat Rock Playhouse. TV: "Encore!" (Disney+), "Macy's Thanksgiving Day Parade", "America's Got Talent", "The Bethenny Show" and "Good Afternoon America". @richardjhinds

**BEOWULF BORITT** (*Set Designer*). Broadway: *Act One* (Tony Award); *New York, New York*; *The Scottsboro Boys*; and *Therese Raquin* (Tony nominations). Additional Broadway credits: *Come From Away*, *The Piano Lesson*, *Freestyle Love Supreme*, *Be More Chill*, *The New One*, *Bernhardt/Hamlet*, *Meteor Shower*, *A Bronx Tale*, *Prince of Broadway*, *Hand to God*, *Sondheim on Sondheim*, ... *Spelling Bee*, *LoveMusik*, *Rock of Ages*, *Chaplin*. Broadway Revivals: *On the Town*, *Sunday in the Park....* Off-Broadway: 100 shows, including *The Last Five Years*, *Fiddler on the Roof* in Yiddish, *Sleepwalk With Me* and *Miss Julie*. He has designed for The NYC Ballet and the Ringling Bros. and Barnum & Bailey Circus and around the world in England, Russia, China, Australia and Japan. 2007 Obie Award for Sustained Excellence. His book about Broadway set design, *Transforming Space Over Time*, is available wherever books are sold.

**TONI-LESLIE JAMES** (*Costume Design*). Broadway: *Jitney*; *Amazing Grace*; *Lucky Guy*; *The Scottsboro Boys*; *Finian's Rainbow*; *Chita Rivera: The Dancer's Life*; *Ma Rainey's Black*

*Bottom*; *King Hedley II*; *One Mo' Time*; *The Wild Party*; *Marie Christine*; *Footloose*; *The Tempest*; *Twilight*; *Los Angeles*, 1992; *Angels in America*; *Chronicle of a Death Foretold*; and *Jelly's Last Jam*. Ms. James is the Head of Design at the Virginia Commonwealth University Department of Theatre.

**HOWELL BINKLEY** (*Lighting Design*). Broadway: *Ain't Too Proud—The Life and Times of The Temptations*, *Summer: The Donna Summer Musical*, *Come From Away* (2017 Tony nom.), *A Bronx Tale*, *Hamilton* (2016 Tony winner/2018 Olivier Award winner), *After Midnight* (2014 Tony nom.), *How to Succeed...* (2011 Tony nom.), *West Side Story* (2009 Tony nom.), *In the Heights* (2008 Tony nom.), *Jersey Boys* (2006 Tony winner), *Avenue Q*, *Parade*, *Kiss of the Spider Woman* (1993 Tony nom./Olivier and Dora award winner). Co-Founder/Resident Lighting Designer (1987-2020), Parsons Dance. 2006 and 2016 Henry Hewes Design Awards for *Jersey Boys* and *Hamilton*. [hemsleylightingprograms.com/howell-binkley-fellowship](http://hemsleylightingprograms.com/howell-binkley-fellowship)

**GARETH OWEN** (*Sound Design*). Olivier Awards for *Come From Away*, *Memphis* and *Merrily We Roll Along*; nominations for *Back to the Future*, *Bat Out of Hell*, and *Top Hat*. Tony Award winner for *MJ: The Musical*; nominations for *& Juliet*, *End of the Rainbow*, and *A Little Night Music*. Currently: *Back to the Future*, *MJ: The Musical*, *& Juliet*, and *Mamma Mia! The Party* in London's West End, Disney's *The Little Mermaid*, Disney's *The Hunchback of Notre Dame*, and *Come From Away* worldwide. More than 280 other commercial musicals around the world.

**DAVID BRIAN BROWN** (*Hair Design*). Broadway highlights: *Moulin Rouge*, *Travesties*, *Frozen*, *Dear Evan Hansen*, *War Paint* (Drama Desk Award), *She Loves Me* (Drama Desk nomination), *The Curious Incident...*, *Gigi*, *The Bridges of Madison County*, *If/Then*, *Macbeth*, *Death of a Salesman*, *Follies*, *Sister Act*, *Shrek*, *Legally Blonde*, *Spamalot*, *Tarzan*, *Nine*, *Gypsy*, *Sweet Smell of Success*, *Aida*, *The Iceman Cometh*, *Chicago*, *Sideshow*, *Steel Pier*. Film/TV credits: *Peter Pan Live* (NBC), *The Sound of Music Live* (NBC), *It's Complicated*, *Angels in America* (Emmy nominated), *Too Wong Foo....*

**AUGUST ERIKSMOEN** (*Orchestrations*). Broadway orchestrations: *Bright Star* (Tony nomination), *Gigi*, *First Date*, *Hugh Jackman: Back on Broadway* (additional orchestrations), *The Addams Family* (dance arrangements, additional orchestrations), *Memphis* (dance arrangements), *Million Dollar Quartet* (associate music supervisor), *Ring of Fire* (associate MD), *All Shook Up* (MD), *Rent* (associate conductor). Off-Broadway: *Bare*, *Romantic Poetry*, *Walmartopia*, *Imperfect Chemistry*. Other: Disney's *Descendants* (Andrew Lipka's "Evil Like Me"), 2011 Billboard Music Awards, *I Am Harvey Milk*, *I Am Anne Hutchinson*, *James and*

---

# WHO'S WHO IN THE COMPANY

*the Giant Peach.*

**IAN EISENDRATH** (*Music Supervisor & Arrangements*) is the Olivier Award-winning, Grammy-nominated music supervisor, music producer arranger and music director for theatre, film and television. Film & Television: Executive Music Producer for Disney's *Snow White*; *K-POP: Demon Hunters* (Sony); *Only Murders In The Building* Season 3 (Hulu); *Spirited* (Apple); *Lyle, Lyle Crocodile* (Sony); *Diana* (Netflix); Fox TV's *A Christmas Story Live*; and *Come From Away* (Apple TV+). Selected Theatre: Music Supervisor and Arranger for the Broadway, Toronto, North American, Australian and U.K. companies of *Come From Away*, *Diana* (Broadway), *A Christmas Story* (Broadway & National Tour), and multiple projects at La Jolla Playhouse, Seattle Repertory Theatre, Pacific Northwest Ballet, Seattle Symphony, ACT, TUTS, Ordway, Casa Mañana, and the Banff Centre for the Arts. University of Michigan graduate.

**WENDY BOBBITT CAVETT** (*Associate Music Supervisor*). Broadway and Off-Broadway credits: *Come From Away*, *Hamilton*, *Mamma Mia!*, *The Scarlet Pimpernel*, *A Year with Frog and Toad*, *The Most Happy Fella*, and *A Tale of Two Cities*. National and International credits: *The Who's Tommy*, *Mamma Mia!*, and *A Chorus Line*. Coming soon is *SuperYou*, a breathtaking contemporary rock musical about a woman who rediscovers her true voice in life and in art when her comic book superheroine creations come to life. Wendy is on the theatre faculty of Wagner College.

**SARAH POOL WILHELM** (*Music Director*). National Tour: *Something Rotten!* Other highlights: *Somewhere Over the Border* (world premiere), *Cinderella*, *In the Heights*, *Lend Me a Tenor: the Musical*, *Crazy for You*, *RENT*, *The Spitfire Grill*, *On the Town*, *Into the Woods*. Much love and many thanks to Andrew, Mom&Dad&Sam, Benedict, Kat, and Toby the doggo. B.M. Piano Performance (DBU); M.M. Vocal Coaching (OCU). @spoolhelm

**JOHN MEZZIO** (*Music Coordinator*) has conducted national tours including *State Fair* starring John Davidson, *Victor Victoria* starring Toni Tennille, and *Cinderella* starring Eartha Kitt and Debbie Gibson. Additionally, Mr. Mezzio was Associate Conductor for Andrew Lloyd Webber's *Starlight Express* at the Las Vegas Hilton. National Tours: *Oklahoma!*, *The Producers*, *Spring Awakening*, *Hairspray*, *The Book of Mormon*, *A Bronx Tale*, *Beauty and the Beast*, and *Fiddler on the Roof*.

**THE BOOKING GROUP** (*Tour Booking Agency*) has represented 28 Tony Award® winning Best Musicals and Plays. Current tours include *The Book of Mormon*, *Chicago*, *Come From Away*, *Dear Evan Hansen*, *Funny Girl*, *Headstones*, *Hairspray*, *Hamilton*, *Mamma Mia!*, *Mean Girls*, *MJ The Musical*, *Mrs. Doubtfire*, *My Fair Lady*, *Pretty Woman*, *Six*, *Tina: The Tina*

*Turner Musical*, *To Kill A Mockingbird*, *Waitress* and *The Wiz*. Future tours include: *A Wonderful World*, *How to Dance in Ohio*, *The Karate Kid*, *Parade*, *Peter Pan Goes Wrong*, *Some Like It Hot* and *Sweeney Todd*.

**THE TELSEY OFFICE** (*Casting*). With offices in both New York and Los Angeles, The Telsey Office casts for theater, film, television, and commercials. The Telsey Office is dedicated to creating safe, equitable, and anti-racist spaces through collaboration, artistry, heart, accountability, and advocacy. [www.thetelseyoffice.com](http://www.thetelseyoffice.com)

**MACKENZIE DOUGLAS** (*Company Manager*). National Tours: *Waitress*, *Fiddler on the Roof* (dir. Bartlett Sher), *Rodgers and Hammerstein's Cinderella*, *Anastasia*. Regional: Shakespeare Theatre Company, Olney Theatre Company. BA: Arts Management and Stage Management, Emerson College. Dog mom to Berkeley. "Human kid" to Canadians Mary and Geord.

**KATE FRIESEN** (*Assistant Company Manager*) is thrilled to be back on The Rock sharing this beautiful story of humanity! National Tours: *Charlie & the Chocolate Factory*, *Elf*, *Annie*, *Dr. Suess' How the Grinch Stole Christmas*. Thank you to my favorite theatre buddy, Ma, for your constant support & encouragement.

**SAM KRONHAUS** (*Production Stage Manager*) is excited to join the company of *Come From Away!* National Tour: *Hairspray* and *Les Misérables*. Regional: *Into the Woods*, Disney's *The Little Mermaid*, and Disney's *Beauty and the Beast*. Other Credits: The Kravis Center, Miami City Ballet, Pittsburgh Ballet Theatre, and Pittsburgh CLO. Proud graduate of Point Park University. Sam wishes to thank his family for their continued love and support!

**CELLO BLANKS** (*Assistant Stage Manager*) (they/them) is a stage manager, writer and dramaturg based in Brooklyn, NYC with a BFA from NYU Tisch School of the Arts. Recent projects include: *Sleep No More* (Punchdrunk, Emersive), *The Shining* (Opera Parallèle), *The Wanderers* (Roundabout Theatre Company), *Odyssey Regional Tour* (The Acting Company), *Carrie* (NYU New Studio on Broadway) as well as Production Coordination and Administrative assistance for Little Island, The Actors Studio, Pace University and others. Big love to my friends & community for keeping me grounded!

**ARTHOUSE** (*Digital Marketing and Advertising*) is a full-service digital agency that partners with forward-thinking advertisers in the strategy and design of innovative brand campaigns. Services include branding, content creation, social management and media buying with a focus on how creativity & connection drives campaign success. We work with our clients to create campaigns that are beautiful and strategic, converting users into active and engaged customers. [arthousenewyork.com](http://arthousenewyork.com)

# WHO'S WHO IN THE COMPANY

**GENTRY & ASSOCIATES** (*General Management*) has managed nearly 250 national and international touring theatrical productions over the past 25 years. Current and upcoming productions include *A Beautiful Noise*, *Beetlejuice*, *The Book of Mormon*, *Come From Away*, *Funny Girl*, *The Great Gatsby*, *Les Misérables*, *Life of Pi*, *Mean Girls*, *Peter Pan*, Cameron Mackintosh presents Andrew Lloyd Webber's *The Phantom of the Opera*, *The Sound of Music* and *The Wiz*.

**MIMI INTAGLIATA** (*Executive Producer*) (she/her) has spent 30+ years working in theatrical production as a Stage Manager, Production Manager, and Producer. Credits: Director of Production Operations, Disney Theatrical Group - *Beauty and the Beast* (Shanghai Disneyland Resort), *Frozen* (Broadway), *Newsies the Musical* (national tour, theatrical film), *The Lion King* (Rafiki tour), developmental productions of *The Hunchback of Notre Dame* and *Shakespeare in Love*. Director of Production, Paper Mill Playhouse – over 40 productions including the World Premiere of *Newsies the Musical*, the North American premiere of the 25th Anniversary tour of *Les Misérables* (in partnership with NETWORKS). Production Manager, *The Dodgers - 42nd Street* (Broadway/Tour), *Urinetown* (Broadway/Tour), and *Bare: A Pop Opera* (original off-Broadway), among others. She and her wife, Alicia Duran, are proud parents of their two children, Celeste and Lucas.

**NETWORKS PRESENTATIONS** (*Producer*) is an industry-leading producer of touring theatrical productions, committed to delivering quality entertainment to audiences worldwide for more than 25 years. Current and upcoming productions include *A Beautiful Noise*, *Beetlejuice*, *The Book of Mormon*, *Come From Away*, *Funny Girl*, *The Great Gatsby*, *Les Misérables*, *Life of Pi*, *Mean Girls*, *Peter Pan*, Cameron Mackintosh presents Andrew Lloyd Webber's *The Phantom of the Opera*, *The Sound of Music* and *The Wiz*.

## STAFF FOR COME FROM AWAY

### EXECUTIVE PRODUCER

Mimi Intagliata

### GENERAL MANAGEMENT

Gentry & Associates  
Gregory Vander Ploeg  
Steven Varon-Moore

### PRODUCTION MANAGEMENT

Networks Presentations  
Jason Juenker  
Alex Williams

### TOUR MARKETING AND PRESS REPRESENTATION

ANITA DLONIAK & ASSOCIATES, INC.  
Anita Dloniak Melissa A. Hazek

### CASTING

THE TELSEY OFFICE  
Rachel Hoffman, CSA

### TOUR BOOKING AGENCY

THE BOOKING GROUP

Meredith Blair

Rich Rundle Brian Brooks  
Jonathan Pearson Maryruth Grabez  
thebookinggroup.com

### COMPANY MANAGEMENT

COMPANY MANAGER

Mackenzie Douglas

ASSISTANT COMPANY MANAGER

Kate Friesen

Production Stage Manager .....	Sam Kronhaus
Assistant Stage Manager .....	Cello Blanks
Dance Captain .....	Nick Berke
Assistant Director .....	Kevin McAllister
Assistant Choreographer/Intimacy Coordinator .....	Jane Bunting
Assistant Choreographer .....	Brandon Kelly
Associate Scenic Design .....	Jenna E. Carino
Associate Costume Design .....	Devario Simmons
Assistant Costume Designers .....	Alexyz Kemp, Neno Russell
Associate Lighting Design .....	Joel Britt
Assistant Lighting Design .....	Amara Payton McNeil, Kat Zhou
Moving Lights Programmers .....	Jonah Camiel, Alyssa Eilbott
Associate Sound Design .....	Chris Luessmann
Associate Hair Design .....	Matthew Armentrout
Marketing/Promotions Consultant .....	Beth Rohlmeier
Production Carpenter .....	pesci
Head Carpenter .....	Justin Rozinski
Assistant Carpenter .....	McKenna Brennan
Production Electrician .....	Zach Alexander
Head Electrician .....	Hannah Kramer
Assistant Electricians .....	Andrew Beauregard, Madison Ramsey
Production Sound Engineer .....	Mason Wisecup
Head Sound .....	Michael Donahue
Assistant Sound .....	Cameron Griffiths
Head Props .....	Aspen Johnson
Head Wardrobe .....	Jeri Elizabeth Meador
Head Hair and Makeup .....	Natalie Phiperno
Dialect Coach .....	Heather Hill
Production Assistants .....	Taylor Drumwright, Mayah Lourdes Burke
Electronic Music Design .....	Billy Jay Stein, Jason Howland and Hiro Iida for Strange Cranium Productions Inc
Physical Therapy .....	NEURO TOUR Physical Therapy, Inc.
Safety Consultant .....	Bryan Huneycutt
Production Photography .....	Matthew Murphy
Video Services .....	HMS Media
Creative Services .....	AKA
Digital Marketing & Advertising .....	Arthouse
	Sara Fitzpatrick, Marc Mettler, Travis Moser, Yael Matlow, Alex Mecklosky
Merchandise .....	The Araca Group
Merchandise Manager .....	Scott Koonce
Accounting .....	NETworks Presentations LLC
Legal Services .....	David F. Schwartz, Esq., Gray Schwartz LLP
HR Services .....	K+k Reset, LLC
Housing .....	Road Concierge
Travel Agency .....	Kessler & Co. / Direct Travel
Trucking .....	Janco Ltd.

### FOR NETWORKS PRESENTATIONS

Chief Executive Officer .....	Orin Wolf
President and Chief Production Officer .....	Seth Wenig
Chief Operating Officer / Chief Financial Officer .....	Margaret Daniel
Business Affairs .....	Scott W. Jackson
Executive Producers .....	Mimi Intagliata, Trinity Wheeler
Associate Producer .....	Hannah Rosenthal
Vice President of Finance .....	Scott Levine
Sr. Director/Finance .....	John Kinna
Controller .....	Jennifer Gifford

Director of Tour Accounting..... Laura S. Carey  
 Tax Director ..... Pat Guerieri  
 Accounts Payables & Receivables Clerk ..... Lisa Loveless  
 Sr. Director, Booking and Engagements..... Amanda Laird  
 Directors, Booking and Engagements ..... Stacey Burns, Colin Byrne  
 Director of Sales ..... Zach Stevenson  
 Director of Marketing ..... Heather Hess  
 Sr. Director/General Management ..... Gregory Vander Ploeg  
 General Managers..... Madeline McCluskey, Heather Moss,  
 Steven Varon-Moore

Associate General Manager ..... Maia Sutton  
 Sr. Director/Production Management..... Jason Juenker  
 Sr. Production Manager..... Hector Guivas  
 Production Managers..... Matthew Reardon, Alex Williams  
 Technical Director ..... pesci  
 Production Coordinator ..... Aimeé Mangual Pagan  
 Director of Operations..... Pearce Landry-Wegener  
 Resource Director ..... Kayla Rooplal  
 People Operations/Payroll Manager ..... Sara Clayton  
 Executive Assistant..... Isabella Schiavon  
 Office Manager..... Michelle Adaye  
 Music Coordinator..... John Mezzio  
 Warehouse Manager ..... Joseph Spratt  
 Warehouse Costume Manager ..... Bobby Maglaughlin  
 Warehouse Costume Shop Assistant ..... Grace Santamaria

### CREDITS

Scenic items fabricated by PRG-Scenic Technologies, a division of Production Resource Group, LLC. Sound equipment from Sound . Lighting and rigging equipment provided by PRG. Cod by Gerard Studios. Additional props by BB Props. Special thanks to BraTenders for hosiery and undergarments. Selected costumes by John Kristiansen New York Inc. Millinery by Arnold Levine. Leather wear by David Samuel Menkes. Official rum partner: Newfoundland Screech Rum. Piano courtesy of Yamaha. "Mr. Michael's" underscore arranged by Alec Berlin.

Rehearsed at Gibeay Studios in New York; and The Public Theatre's rehearsal studios.

### Special Thanks to

Carl Pasbjerg, Alchemy Productions; Russell Godwin, Matt Peopole, Clint Bond, Jr., Nate Putnam.

Savannah Civic Center, Savannah, GA,  
 Monty Jones, Jr., General Manager; and  
 John McCall, Director of Programming,  
 Nederlander National Markets

### Insurance Broker Services

EPIC Entertainment and Sports

### Financial Services and banking arrangements by

Flagstar Bank N.A.

### Originally produced by

Junkyard Dog Productions, Jerry Frankel, Latitude Link, Smith & Brant Theatricals, Steve & Paula Reynolds, David Mirvish, Michael Rubinoff, Alhadeff Productions, Michael Alden & Nancy Nagel Gibbs, Sam Levy, Rodney Rigby, Spencer Ross, Richard Winkler, Yonge Street Theatricals, Sheridan College, Michael & Elise Coit, Ronald Frankel, Sheri & Les Biller, Richard & Sherry Belkin, Marlene & Gary Cohen, Allan Detsky & Rena Mendelson, Lauren Doll, Barbara H. Freitag, Wendy Gillespie, Laura Little Theatricals, Carl & Jennifer Pasbjerg, Radio Mouse Entertainment, The Shubert Organization, Cynthia Stroum Tulchin, Bartner Productions, Gwen Arment/Molly Morris & Terry McNicholas, Maureen & Joel Benoliel/Marjorie & Ron Danz, Pamela Cooper/Corey Brunish, Demos Bizar/Tanninger Entertainment, Joshua Goodman/Lauren Stevens, Adam Blanshay Productions/Judith Ann Abrams Productions, Bill & Linda Potter/Rosemary & Kenneth Willman and La Jolla Playhouse and Seattle Repertory Theatre.

### GANDER AND AREA SPCA INC.

Thank you for coming to the show today! The real Oz Fudge reached out to us on behalf of the Gander SPCA. They have outgrown their space and are in need of funds for a new building. If you are so inclined, please scan the QR code or visit the link below to help this worthy cause.



<https://www.gofundme.com/t/lets-finish-building-our-new-animal-shelter>

### CONNECT WITH US!

ComeFromAWay.com

Facebook and Youtube: @ComeFromAWay

IG and X: @WeComeFromAWay

#ComeFromAWay #WeComeFromAWay



All stage work performed by employees represented by IATSE.



United Scenic Artists represents the designers and scenic painters for the American Theatre.



The Director and Choreographer are members of the Stage Directors and Choreographers Society, an independent national labor union.

**CSARCH**  
 architecture | engineering



Proud supporter of education and  
 the arts at Proctors Collaborative!



CSARCHPC.COM

# PROCTORS

WOULD LIKE TO WELCOME AND  
**THANK THE FOLLOWING  
GROUPS ATTENDING**

**COME FROM AWAY**  
TRUE STORY. HIT MUSICAL.

**AYCO Company**

**Anthony & Carol Crucetti Group**

**Elizabethtown Social Center**

**GE Research Whitney Club**

**Glen Eddy Retirement Community**

**Graney and King, LLC**

**Jennifer Radigan Group**

**Jill Blackman Group**

**Joseph Tarantelli Group**

**Julie Misiano Group**

**Kermis Club**

**Kingston Retired Teachers**

**Lake Placid High School Drama Club**

**Maureen Hackett Group**

**Maureen & Bob Long Group**

**Northville Music Department**

**PEF Membership Benefits Program**

**Pendragon Theatre**

**Rutland High School Music Department**

**Schalmont Concert Choir**

**Siena College – First Year Seminar**

**Tours By Design**

**Tribes Hill Iroquois Seniors**

For information about the benefits associated with booking your group of 10 or more to our next show, contact [groupsales@proctorscollaborative.org](mailto:groupsales@proctorscollaborative.org)

\*Groups confirmed as of February 7, 2025

# P PROCTORS 2025 LEGACY SOCIETY



"By being members of the Proctors Legacy Society, we are leaving a meaningful mark on a leader in the regional arts that aligns with our personal values. It's a way to add to the

foundation built by earlier supporters, providing resources that continue beyond our lifetimes, reflecting our passion for the arts and enabling Proctors to thrive for years to come." —Chet & Karen Opalka



"I joined the Proctors Legacy Society specifically because of the Collaborative School of the Arts. I strongly identify with its goals of helping children, regardless of income, to have the arts in their lives. Yes, it's wonderful to watch a performance on a world-class stage, but it's

also about teaching the next generation the skills so they are able to perform on that stage. That is so empowering to kids from across the Capital Region." —Betsy Sandberg

## We thank the following who have included Proctors in their gift planning, helping to guarantee that Proctors continues to flourish in the future.

Harry & Betty Apkarian †	Gerard & Anna Falotico	The Micklus Family	Martha Szuminsky †
Raimundo Archibold & Beverly Swimm	Al & Jane Fritz †	Carolyn † & Len Montorio	Kevin & Tara Testo
Rick Barlow	Beatrice B. Ganance †	Paul & Loretta Moore	Talonda Thomas
Betty C. & Lyle Barlyn	Neil & Jane † Golub	Philip & Kathleen Morris	Emily H. Tittsworth
Patricia & Keith Barney	Mona Golub & Marie DeBrocky	Chet & Karen Opalka	Frank & Nadine Toma
Lionel & Deborah Barthold	Evelyn C. Haase †	Donald J. Orr Jr.	Samson O. A. Ullmann †
Jane Barton †	Susan M. Haswell	Gioia Ottaviano †	Samuel C. Wait, Jr. †
Nancy Bell (In Memory of Eli Taub)	Fred Heitkamp	Pamela Pearlman & James Kalohn	Harriet M. Wall †
Anthony † & Julienne Bifaro	Karen E. Helms	Mr. & Mrs. Terry & Anne Phillips	Frank & Joanna Walsh
Raymond & Valerie Bleser	Bill & Fulvia Brun † Hickman	Drs. Gregory Pinto & Natalie Adler	Anthony K Ward & Barbara Bishop Ward
Nell Burrows	Ms. Patricia Hogan †	Brian & Renee Ray	Edwin T. Sells & Eveline Ward-Sells †
Charles W. Carl, Jr. †	Mindy & Jesse Holland	Philip Rosselli †	Drs. John & Jean Wilkinson †
Richard & Lou Ann Carlstrom	Elvira Houck †	Katherine S. Rozendaal †	Jennifer Fazziola Yocum & Ben Yocum
Tim & Leda Christy	Richard Huether †	Betsy Sandberg	Melissa M. Zambri & Gina M. Moran
Ellen & Bruce Cohen	Karla Jaime-Benitez	Edna M. Scheper †	William † & Marlene Zampier
Barbara T. Costanzo	Karen B. Johnson †	Ruth B. Shapiro †	Anonymous (3)
Barry & Beth Davis	Kelley J. Keefe	Bob & Kathy Sheehan	
James I. Decker †	Dr. Margaret (Peggy) King	Cynthia & Herb Shultz	
Whitney G. Denio †	Kenneth T. Lally †	Bebe & Walter Spodnewski †	
Michael & Isla Dreher	Rob & Jean Leonard	Jason A. Stallard	
Roy & Janine Dykeman	James M. Lommel †	Don & Roberta Steiner	
Ann & Don Eberle	In Memory of the Hon. Guido A. Loyola	Mary Stock †	
Charmaine M. Fallon †	Agnes MacDonald †		

† Deceased

## Legacy Society gifts will increase our endowment and continue our work to:

- Provide scholarship funding for 10,000 students per year to attend a variety of educational programs, from first encounters with the arts to college and career training.
- Fund the presentation of a diverse array of arts programming, to ensure access for future generations and representation of our entire community.
- Subsidize our mission-driven community resource programs, such as the Downtown Ambassadors and in-kind services for local organizations.
- Support the ongoing maintenance and preservation of our historic landmark.

To learn more about Proctors Legacy Society, please contact:  
Barbara Bishop Ward, Endowment Campaign Director  
bward@proctorscollaborative.org (518) 382-2884 x 133



To view  
our Legacy  
brochure

# ADDITIONAL INDIVIDUAL MEMBERS

Gifts received as of Feb. 17, 2025

2024 - 2025

 PROCTORS

## **PRESIDENT'S CIRCLE \$25,000+**

Wally Graham \*\*

## **DIRECTOR \$10,000+**

Mona Golub & Marie DeBrocky \*\*\*

## **PRODUCER \$5,000+**

Jack & Connie Hume \*\*

Arlene D. Ida \*

Mel & Lynn Pennacchia \*\*

Richard & Theresa Sleasman

## **SUSTAINER \$2,500+**

Donna Bartholomew \*

Gregg W. Brown & Betsy Bitner \*

Cory & Megan Czajka

Drs. Marilyn Kacica & Joseph Dudek \*\*\*

Dr. & Mrs. Gary R. Dunkerley \*\*\*\*\*

Charles & Nancy Gore \*\*\*

Michael Ingalsbe & Eleanor Kittle Ingalsbe \*\*

Kimberly Sanger Jones & E. Stewart Jones Jr.

Alexander Keeler

Ed & Judy Lowe

Mike & Suzanne Mason \*\*

Katherine & Frank McCleneghen

Brenda Osorio

Bob & Linda Samson \*\*\*

Joseph Snapp (In Memory of Carolyn) \*

Stephen & Irene Trudell

## **ANGEL \$1,000+**

Kay & Don Ackerman \*\*\*\*\*

Mary L. Anderson \*\*\*\*\*

David & Tammy Apkarian \*\*

Eileen Armstrong \*\*

Margaret Banaszewski (In Memory of Husband Paul)

Dr. Bala

Nancy Bell (In Memory of Eli Taub) \*\*\*\*\*

Julie Bifaro \*\*\*\*\*

Steve & Theresa Brenon \*\*\*\*

# ADDITIONAL INDIVIDUAL MEMBERS

Gifts received as of Feb. 17, 2025

2024 - 2025

 PROCTORS

## ANGEL \$1,000+ (continued)

Sylvie Marie Briber \*\*\*\*\*  
The Burlingame Family  
Nancy Carey Cassidy \*\*  
Dr. & Mrs. Chen \*  
Christopher & Emily Clark  
Joseph M. Clement  
The Clements Family  
Michele & Randolph Collins  
Jack & Karen Consiglio  
Hon. Ann Crowell & Steven Shultz  
Robin & John Davey  
Michael A. Davi (In Memory of Gabriel & Melinda Davi)  
Kathleen M. Dean \*\*\*\*  
Sal & Kathy Ervolina \*\*  
Bob & Sandy Farmer \*\*\*  
Judith E. Fulfs \*\*  
Kenneth Gacioch \*  
Thomas & Nancy Gifford \*  
Jackie Gorski \*\*\*\*  
Bill Harris & Holly Katz \*\*\*\*\*  
Ross & Deborah Hanna  
Dr. Stephen & Mrs. Pamela Hassett \*  
David & Jessica Hennel \*\*\*  
Nancy E. Hoffman, Esq. & Thomas G. Spagnoletti  
John & Ellen Hubbard \*\*  
John & Janet Hutchison \*\*\*  
Karla Jaime-Benitez  
Phil & Brigitte Johnson \*\*\*\*\*  
Fred & Sandy Kaplan \*\*\*\*\*  
Teresa Kennedy \*  
Dr. Liz Lanoy  
Brian Lawlor & Eleanor Decoursey \*  
Rich & Mary Lederer \*\*  
Paul Legac & Alison Cisek  
Sheila & Ira Lobel \*\*  
Paul W. Martin & Margaret Conroy-Martin \*\*\*\*\*

# ADDITIONAL INDIVIDUAL MEMBERS

Gifts received as of Feb. 17, 2025 2024 - 2025

 PROCTORS

## ANGEL \$1,000+ (continued)

Greg McCarthy  
Amy Church McDonough  
Danielle & Peter Palleschi  
Audrey Patneaude \*\*\*\*\*  
Don & Lois Porter \*\*  
Lisa Queeney-Vadney C.F.P.  
Carol Raabe \*\*  
Dr. Daniel Sablich  
Joyce Sammo \*\*\*  
Tobi & Gary Saulnier \*\*  
Theresa Smith & Arnie Buell  
Dr. John Spring \*\*\*  
Paul & Deborah Spurgas  
David J. Taffany & Nancy C. Sapio, M.D. \*\*\*\*\*  
Lee Vilardi  
Drs. Helen Vu & Bernard Ng \*  
Daniel & Dianne White \*\*

## BENEFACTOR \$750

Dr. & Mrs. Richard & Tomoko Akin *****	Jeff & Catherine Janiszewski *
Barbara Ash *****	Lopez & Kvam Family
Sandy & Sam Bell *****	Yolanda Matura **
Frank & Stephanie Brennan	Felipe Moon
George & Kathy Desmarais *	Henry & Mary O'Brien *
William Dzierson	Dr. Steven Oshins
Gail Garrison ***	Dan & Susan Petrivelli *
David E. Guinn *	Robin Raco & Family ****
Sue Hanson & Herb Pagano, Jr.	Margaret Squazzo & Heather Morrison **
Roscoe & Joanne V. Haynes **	Michele & John Tremblay
Laura A. Heffernan *	Carol Troost **

## INVESTOR \$500

Carol M. Cascio *****	H. Susan Jeffords **
Ron & Susan Backer *	Linda & Karen Karlsen
Ms. Serena Ingram Benson	Doug & Ruthie Karrel
Charlotte Buchanan	Joel & Sara Kremer
Thomas & Georgia Decker	Mr. Robert Lindinger **
Martha & Mike Iacolucci	Kathleen M. Lutz *

# ADDITIONAL INDIVIDUAL MEMBERS

Gifts received as of Feb. 17, 2025

2024 - 2025

 PROCTORS

## INVESTOR \$500 (continued)

Stephen & Mary Madarasz  
Antoinette Maniatty & Kurt Anderson  
Hugh & Sheila Mariaca \*  
James & Maryann McDermott \*\*  
Dr. & Mrs. John McMichael \*\*\*\*\*  
moore, jr  
Rev. & Mrs. Terrence O'Neill \*\*\*\*\*  
Evelyn Pachucki \*\*\*\*\*  
Sylvia & Robert Phillips \*\*

David & Kendra Pratt  
Bob & Amy Pressly  
Mr. & Mrs. Joseph C. Rizzo \*\*\*\*\*  
Tamara & Thomas Russell \*\*  
Patricia Schell  
Karen & Bernhard Scholz \*\*  
Charles & Elizabeth Seeley \*  
Geraldine Zandri \*  
Anonymous Donor

## SUPPORTER \$300

Charles Ansert  
Gabriela & Gary August  
Pat & Bob Balcom  
Carol Bayer  
Diana R. Becker  
Jim & Jan Bornheim \*\*\*\*  
LG Boucher \*\*  
Louis & Judy Buhrmaster \*\*\*\*\*  
Anne & Vince Choppy  
Bonnie & Steve Cramer \*  
Drs. Christopher & Colleen Dibble \*\*  
Joanne & Michael Esposito \*  
Therese Giana  
Jon & Bella Goin  
Peter & Rosemary Gold \*\*\*\*\*  
Mrs. Melia Gordon  
Bill & Pinky Haley \*\*  
Jim & Diane Harrington \*\*

Milly & Al Karoly \*\*  
Dr. & Mrs. Oscar & Kathryn Lirio  
Mary S. MacDonald  
Edwin & Janice Otis  
Kathleen Porcell  
Carol Putorti  
W. Michael Reickert \*  
Dave & Lauren Roecker \*  
Steve & Debby Roecker \*  
Diana & Christopher Rulon  
Dr. G. Jeremiah & Mrs. Gail C. Ryan \*  
Carol Steele  
Amy & Kevin Thivierge  
Mary Ann VanAlstyne  
Susan M. Ward \*\*\*\*\*  
Ryan Leigh Waterman  
The Weinberg Family \*\*\*\*\*

## FRIEND \$120

In Appreciation of Raimundo Archibold  
Phyllis Barbera \*\*  
Carol L. Bates  
Benaman/Roginski Family  
Shandra & Shay Brickel  
Mr. Duncan Calhoun  
Lewis & Allison Campbell  
Audrey & Major Capers \*  
Richard & Lorraine Carlson \*\*\*\*\*  
Frank Cerio

Carole J. Chaisson  
Lonnie & Suzanne Clar  
Phil & Shirley Clark  
Patricia Clausi & Thomas Ciacetta \*  
Suzanne & Thomas Collins  
Ronald Comstock & Barbara Hall \*\*\*  
David Connelly & Michol Murphy  
Mary Lou Crane \*  
Patrick J. Cremmins  
Kathleen & Dan Crozier

# ADDITIONAL INDIVIDUAL MEMBERS

Gifts received as of March 5, 2025 2024 - 2025

 PROCTORS

## FRIEND \$120 (continued)

Ellen & Joe Daniello ***	Michael & Maryellen Moore
Christopher & Eleanor Dennis *****	Cheryl Mugno & William Trompeter *
Bob & Joanne Dial	Richard Norton
Mary & Gary DiSanto-Rose *	Margaret Novak & John Mishanec *
Amy Dostie	JoAnn O'Connell
Mr. Richard X. Drennan	Edward John Peck
Connie DuVerney **	Daniel & Melinda Perrin *
Eugene & Mary Ellis *****	Robert Pezzano
Donna Lamkin Faddegan	Reed Philippi
Robert & Paula Farquharson	Nancy Rasner
Carl A. Felix	Karina R. Ricker ***
Donald Frament	Donald Romines *
Antoinette Gelmont	Emily Roth
Jerianne Green	Virginia Sawicki ***
James & Lorraine Gorton	Shelton & Barbara Schmidt
Andrew & Susan Gregory *	Jeffrey C. Seeley
Annette Guido **	Diane Sisario
Dr. Hasmukh C. Harde	Trudi Skinder & Peter Sage
Betty Harrison	Diane & Sarah Stedman *
Frank & Barbara Hart ****	Donald & Rochelle Stacher
Carol Hoose **	Jack & Susan Sweeney ***
Carole Ireland	Elizabeth Stehl
Murray & Marsha Jaros **	Don & Andrea Stalpinski *****
Scott Kilbourn & Diane Bengtson Kilbourn **	Stanley & Ellen Strauss
Bruce & Nancy Knudsen	Jacki & Lyman Sweeney **
Andrew & Jennifer Krakat	Joyce Teitelman **
Dr. Joseph Lalka & Teresa Ribadenerya *	Janice Terry *
Mrs. Sarah Laustrup	Dave & Sara Torrey *
Linda Lawrence	Mr. Vincent Verro
Carl & Janet Linkinhoker *****	Mr. Frank Vigliotti
Alice Lissow	Mary Moore Wallinger
Raymond & Joan Ma	Neil & Karen Weiner
Alvin & Sally Magid *	Gerry & Jerry Welcher
Daniel Manley	Lisa Weller
Mr. Nicholas Marchese	Don Wheeler
Maybee-Schiller Family	Eric White
Cynthia Mayer	Ashley Whitney
Bob & Marcia Meyer	Catherine Williams *****
Kendra & Jake Miller	Patricia Wright
Marietta A. Mitchell **	Mr. Ronald J. Zaleski
	Anonymous Donor

WE THANK YOU FOR  
YOUR SUPPORT!

\* Indicates 5 years of giving.

\*\* Indicates 10 years of giving.

\*\*\* Indicates 15 years of giving.

\*\*\*\* Indicates 20 years of giving.

\*\*\*\*\* Indicates 25 years of giving.



## 2024-2025 ADDITIONAL CORPORATE SPONSORS AND FOUNDATION AWARDS

### CORPORATE SPONSORS \$20,000 – \$34,999

**G.E. Vernova**

### CORPORATE SPONSORS \$5,000 – \$9,999.

**Arrow Bank**

**Attentive Care**

**BBL Companies**

**Capital District Transportation Authority**

**Capital InteriorScape, LLC**

**Daley's on Yates**

**Hudson Valley Credit Union**

**Peregrine Engineering Consulting**

**TRANE Technologies**

**Trustco Bank**

### CORPORATE SPONSORS \$3,000 – \$4,999

**CSArch**

**Goldman Sachs AYCO**

### CORPORATE SUPPORTERS

**Greno Industries**

Performances are made possible by the New York State Council on the Arts with the support of the office of the governor and the New York State Legislature.



**Council on  
the Arts**

Gifts received as of Jan. 9, 2025

**24** season **25**

*immerse yourself  
in the sights, sounds  
and sensations of the*

**SSSO**  
schenectady-saratoga  
symphony orchestra

Learn about SSSO subscriptions  
and single tickets at [sssony.org](https://sssony.org)



# Collaborative SCHOOL OF THE ARTS



## YOU BELONG HERE

**Take your experience to the next level!**



### **CAREER TRAINING PROGRAMS**

Broadway Tech... Broadway Master Class Series...  
Entertainment Technology... Collaborative Academy for Theatrical Training...  
Internships... Apprenticeships...



### **SCHOOL PROGRAMS**

Broadway Shows... High School Musical Theatre Awards...  
On-The-Go! Tours... Student Matinees...



### **SUMMER PROGRAMS**

Broadway Camp... Broadway Camp Jr... Reel Adventures...  
Rock Camp... Summer Young Acting Company...



### **YOUTH PROGRAMS**

Acting Academy... CAST... MediaLab... Next Act...  
Theatre Arts Programs... Young Playwright Contest...

**Accessible. Affordable. Attainable.**

For more information go to [CollaborativeSchoolOfTheArts.org](http://CollaborativeSchoolOfTheArts.org) or email us at [school@proctors.org](mailto:school@proctors.org)

You've seen the show.  
It's time to make plans  
for the encore.



Ready to step into the world of Come From Away?  
Make this the year you experience the hospitality and  
charm of Newfoundland and Labrador. Plus, see our own  
Come From Away on stage in Gander, where the story  
unfolded. Start planning at [NewfoundlandLabrador.com](http://NewfoundlandLabrador.com).

  
Newfoundland  
Labrador  
CANADA

# PREMIERE TRANSPORTATION

*"Our Name Says It All"*

**PROUD SPONSOR OF  
PROCTORS THEATER**

**BOOK YOUR RIDE TODAY!**

(518) 459-6123  
RIDEPREMIERE.COM



## OUR SERVICES INCLUDE:

**Private Car Service:** Enjoy a personalized and luxurious ride to and from your destination.

**Weddings:** Elegant transportation for your special day, ensuring every moment is perfect.

**Executive Transport:** Professional and discreet service for business executives.

**Special Events:** Make your special occasions memorable with our diverse fleet.

**And More:** Tailored transportation solutions for any occasion.

ALBANY, NY • SYRACUSE, NY

Keep on  
the sunny side  
*of life!*



The Kingsway Community philosophy is simple: keeping a positive outlook on life can preserve health, wellness and emotional well-being.

Enjoy group activities, social gatherings, fine dining, fitness classes and more. Come see why so many people call Kingsway home.



kingswaycommunity.com

Skilled Nursing | Rehabilitation | Assisted Living  
Memory Care | Senior Apartments | Home Care | Respite

## CANALI'S

Restaurant & Banquets

*In business for over 72 years*

126 Mariaville Rd., Rotterdam

(518) 355-5323

OPEN AT 4PM • WED.-SUN.

*Same Great Food! Same Great People!*

Visit us at [www.canalisrestaurant.com](http://www.canalisrestaurant.com)  
for all your dinner & catering needs.

# YOU BELONG HERE



PROCTORS

the REP ★

UPH

MASTER CLASS  
INTERNSHIPS  
SUMMER INTENSIVES

TAKE YOUR TRAINING  
TO THE NEXT LEVEL!

[collaborativeschoolofthearts.org](http://collaborativeschoolofthearts.org)



# MEMORY LOSS?

Protect your memories!

**Richard F. Holub M.D.**  
President & Director

**CONTACT US FOR A  
FREE MEMORY  
SCREENING!**

**518-426-0575**

[AlzheimersResearchCenterAlbany.com](http://AlzheimersResearchCenterAlbany.com)



## WHY HARVEST HOMES ?

- HARVEST HOMES HAS BEEN IN BUSINESS SINCE 1987
- DEALER PROGRAMS AND INCENTIVES
- OUR UNIQUE PANELS INSTALLED IN DAYS
- PANELIZED WALLS & FLOOR DECKS
- 300 MILE DELIVERY FROM ALBANY, NY

**"LET OUR STATE  
OF THE ART  
PANELIZED  
SYSTEM HELP  
WITH YOUR  
NEXT BUILD"**



## Panelized Building System

- DESIGN SERVICES
- BUILDER NETWORK
- EXPERIENCE & REPUTATION
- COMMITMENT TO QUALITY

**CONTACT US  
518-895-2341  
[HARVESTHOMES.COM](http://HARVESTHOMES.COM)**



**HARVEST HOMES INC.**



Lia Cars for Family. Lia Cars for Future. Lia Cars for Adventure. Lia Cars for Girls' Night. Lia Cars for Happiness. Lia Cars for Safety. Lia Cars for Friends. Lia Cars for 518. Lia Cars for Entertainment. Lia Cars for Insurance. Lia Cars for Spontaneity. Lia Cars for Night Life. Lia Cars for Veterans. Lia Cars for Open Roads. Lia Cars for Blue Skies. Lia Cars for The Road Less Traveled. Lia Cars for Dreamers. Lia Cars for Service. Lia Cars for a Greener Tomorrow. Lia Cars for Speed Demons. Lia Cars for Road Trips. Lia Cars for the Scenic Route. Lia Cars for Future. Lia Cars for Pets. Lia Cars for Guys' Nights. Lia Cars for Rental. Lia Cars for Quality Time. Lia Cars for Every Day.

Lia Cars for Community.

**Lia**  
Lia Cars for Life.

21+ Locations || LiaCars.com || NY • CT • MA



Mohawk Ambulance  
is proud to support  
the Proctors  
2024-2025 Playbill

*Dedicated.  
Reliable.  
Professional.*



**MOHAWK**  
AMBULANCE SERVICE

ALBANY AREA:  
(518) 434-4151  
RENSSELAER AREA:  
(518) 274-4888

SARATOGA SPRINGS AREA:  
(518) 584-1222  
SCHENECTADY AREA:  
(518) 374-4401

MohawkAmbulanceService.com

Where a love for  
music is nurtured...



**Woodland Hill**  
MONTESSORI SCHOOL

For children 18 months through the 8th grade



Shine Like You're the  
Star of the Show

# Free Car Wash!

## How to Get Your Free Wash

1. Scan the QR code with your phone
2. Text the keyword "**Showtime**"
3. We'll text your free wash voucher to you
4. Visit any Hoffman Car Wash & scan your free wash voucher



Scan to  
Download

from our friends at



By signing up, you agree to receive ongoing text message alerts from Hoffman Car Wash. Consent not required for purchase. Up to 8 messages per month. Limited to 1 free wash offer per person. Terms & Conditions / Privacy Policy at [hoffmancarwash.com](http://hoffmancarwash.com). Reply STOP to cancel; HELP for help. Message & Data rates may apply. Protr24.



**NATIONAL MUSEUM OF RACING AND HALL OF FAME**  
**OPEN YEAR-ROUND!**

[RACINGMUSEUM.ORG](http://RACINGMUSEUM.ORG)

191 UNION AVENUE, SARATOGA SPRINGS, NY 12866

(518) 584-0400

FOLLOW US @NMRHOF



# BECOME A SPONSOR



**and link our brands together  
in the community.**

**Partner with us to enhance your brand awareness,  
entertain your clients and serve our community in  
meaningful and inspiring ways.**

**"Supporting Proctors helps us reach our most valuable customers  
and attract new ones, while sharing our love for the arts."**

**- Price Chopper/Market 32**

**"Being a sponsor has increased our brand's visibility and opened  
up new opportunities for growth and collaboration."**

**- Gallagher**

**"As a second generation takes over our company, we try to  
increase our annual corporate sponsorship to support this  
wonderful form of entertainment."**

**- R.D. Wright, Inc.**



**To learn more, call Kristen Cargill, Director of Corporate Relations at 518.382.3884 ext. 170  
or Email: [kcargill@proctorscollaborative.org](mailto:kcargill@proctorscollaborative.org)**



## **2024-2025 CORPORATE SPONSORS AND FOUNDATION AWARDS**

### **CORPORATE SPONSORS \$35,000+**

**Fenimore Asset Management  
KeyBank  
New York State Council on the Arts  
The City of Schenectady  
The County of Schenectady  
The Schenectady Metroplex Development Authority  
The Shubert Foundation  
Upstate Ford Dealers**

### **CORPORATE SPONSORS \$20,000 - \$34,999**

**Bonacio  
BST & Co. CPAs, LLP  
Ellis Medicine/Bellevue Woman's Hospital  
Hill, Gosdeck, McGraw & Nemeth  
Hoffman Car Wash  
Infinity Med Solutions  
Lia Auto Group  
LogicalNet Corp  
M&T Bank  
MVP Health Care  
Overit  
Pinnacle Roofing Inc.  
Price Chopper/Market 32  
Dexter and Deborah Senft  
Whiteman Osterman & Hanna LLP**

**This performance is made possible by the New York State Council on the Arts with  
the support of the office of the governor and the New York State Legislature.**



**Council on  
the Arts**

Gifts received as of July 2024



## **2024-2025 CORPORATE SPONSORS AND FOUNDATION AWARDS**

### **CORPORATE SPONSORS \$10,000 - \$19,999**

**Albany Chefs' Food and Wine Festival**  
**Adirondack Trust Company**  
**Best Cleaners**  
**Bobear Family Fund**  
**Broadview Federal Credit Union**  
**William Gundry Broughton Foundation**  
**Center for Economic Growth**  
**Citizens Bank**  
**Coca-Cola Beverages Northeast Inc.**  
**Columbia Development Companies**  
**Community Bank, N.A.**  
**Courtyard Marriott Schenectady**  
**Crowne Plaza Albany-Desmond Hotel**  
**The Daily Gazette**  
**DeCrescente Distributing Company**  
**Dimension Fabricators**  
**Fenimore Asset Management**  
**Gallagher**  
**The Lucille A. Herold Charitable Trust**  
**Logic Technology Inc.**  
**M/E Engineering**  
**Mashuta Family Charitable Trust**  
**Mazzone Hospitality**  
**MLB Construction Services, LLC**  
**National Grid**

**This performance is made possible by the New York State Council on the Arts with  
the support of the office of the governor and the New York State Legislature.**



**Council on  
the Arts**

Gifts received as of July 2024



## **2024-2025 CORPORATE SPONSORS AND FOUNDATION AWARDS**

### **CORPORATE SPONSORS \$10,000 - \$19,999 cont.**

**John D. Picotte Family Foundation  
Rivers Casino & Resort/The Landing Hotel  
Rockefeller Capital Management**

### **CORPORATE SPONSORS \$5,000 - \$9,999**

**The Adelphi Hotel  
Barclay Damon LLP  
Berkshire Bank  
Bond, Schoeneck & King PLLC  
The Bonadio Group-CPAs Consultants & More  
CDPHP  
Carlilian Foundation  
County Waste and Recycling  
CSArch  
Double Tree/Hampton Inn Schenectady  
G.E. Gas & Power  
Barry Alan Gold Memorial Fund  
Hacker Murphy, LLP  
Hampton Inn and Suites Albany Downtown  
Harris Beach PLLC  
The Community Foundation for the  
Greater Capital Region Hershey Family Fund  
Hill & Markes Wholesale Distributors Inc.  
Keeler Motor Car**

**This performance is made possible by the New York State Council on the Arts with  
the support of the office of the governor and the New York State Legislature.**



**Council on  
the Arts**

Gifts received as of July 2024



## **2024-2025 CORPORATE SPONSORS AND FOUNDATION AWARDS**

### **CORPORATE SPONSORS \$5,000 - \$9,999 cont.**

**Lemery Greisler LLC  
Marcella's Appliance Center  
J.M. McDonald Foundation  
National Endowment for the Arts  
Peregrine Engineering Consulting  
Premiere Transportation  
R. D. Wright Inc.  
Regeneron  
The Review Foundation  
Saratoga Financial Services  
Sotheby's International Realty  
Spotlight News  
Stewart's Shops/Dake Family  
Transfinder**

### **CORPORATE SPONSORS \$3,000 - \$4,999**

**Dunkin/The Teixeira Network  
Embassy Suites Saratoga Springs  
Environment One  
GE Foundation  
Hesnor Engineering Associates, PLLC  
Manginos Buick GMC  
Spa City Motor Lodge  
Teal, Becker & Chiaramonte, CPAs, P.C.  
David and Candace Weir Foundation**

**This performance is made possible by the New York State Council on the Arts with  
the support of the office of the governor and the New York State Legislature.**



**Council on  
the Arts**

Gifts received as of July 2024



at PROCTORS at the REP ★ at UPH

## 2024-2025 CORPORATE SPONSORS AND FOUNDATION AWARDS

### CORPORATE SUPPORTERS

Access Compliance, LLC

Adirondack Beverage

Actors Equity Foundation

Delmar Beverage

Equinox Companies

Harris Builders

NLH Property Management Services, LLC

Saratoga Living

Tablecloths for Granted

Trustco Bank

Thaler Reilly Wilson Architecture & Preservation

This performance is made possible by the New York State Council on the Arts with the support of the office of the governor and the New York State Legislature.



Council on  
the Arts

Gifts received as of July 2024

**PROCTORS**

2024 High School  
Musical Theatre Awards  
at Proctors

**give**  
**BECAUSE IT MATTERS.**

IT MATTERS TO OUR STUDENTS, TO OUR ARTISTS, TO OUR COMMUNITY.

Scan here to donate  
to Proctors!  
[atproctors.org/donate](https://atproctors.org/donate)

# INDIVIDUAL MEMBERS

Gifts received as of Aug. 5, 2024 2024 - 2025  PROCTORS

## PRESIDENT'S CIRCLE \$25,000+

Neil Golub \*\*\*\* Janet & Michael Mulvaney \*\*\*  
Anthony & Joyce Mashuta \*\*\* Tom & Dusty Putnam \*\*  
Heather & Jason Ward \*

## PRESIDENT'S CIRCLE \$15,000+

Chester N. & Douglas G. Caster-Fish \*\*\* Chet & Karen Opalka \*\*\*\*  
Wally Graham \*\* In Memory of Eveline Ward-Sells &  
In Memory of Blaine H. Johnston & Edwin T. Sells \*\*\*\*  
Donald R. Smith Jr. \*\*\*

## DIRECTOR \$10,000+

Carol Borthwick \*\*\*\*\* Fred Heitkamp \*\*\*\*\*  
Sue Ciarmiello & Val Mackey \*\*\* The Massry Family \*\*  
The Dake Family Ryan & Nicole Micklus \*  
David M. & Donna C. Dardaris\*\* Michael & Leslie Mills \*  
Carol L. Hammer \*\* Vera Weiss \*\*\*\*\*  
Tom & Jane Hanley \*\*\* Melissa M. Zambri & Gina M. Moran \*\*

## PRODUCER \$5,000+

Jim & Chris Allard \*\*\* Bradley G. & Catherine A. Lewis \*\*\*\*  
Raimundo Archibold & M Sherry Gold & Wendell G Lorang \*\*  
Beverly Swimm \* Mona Golub & Marie DeBrocky \*\*  
Rick & Renee Barlow David & Patricia Gosda \*\*\*\*\*  
Patricia & Keith Barney \*\*\* Nancy Hershey \*\*\*\*  
Seth & Sherry Barnum \*\*\*\*\* Jack & Connie Hume \*\*\*\*  
Richard & Peggy Becker \*\*\* Paul & Loretta Moore \*\*\*  
Richard & Lou Ann Carlstrom \*\*\*\*\* Tom & Linda Murphy \*  
Bruce & Ellen Cohen \*\*\*\* Audrey Osterlitz \*\*\*\*  
Gary & Aimee Dake \* Mel & Lynn Pennacchia  
Sandy Daly \*\*\*\*\* Terry & Anne Phillips  
Jonetta Darcy \*\*\* Drs. Gregory Pinto & Natalie Adler \*\*\*\*\*  
Dr. Michael F. Dempsey \*\*\*\*\* Anne B. Putnam \*\*\*  
Kate & Jerry Dudding \*\*\* Brian & Renee Ray  
Roy & Janine Dykeman Richard & MaryJane Shave \*\*\*  
Don & Ann Eberle \*\*\*\*\* Kathy & Bob Sheehan \*\*  
Dr. Emily T. Etzkorn & Tony Ward & Barbara Bishop Ward \*\*\*\*  
Mr. Jerry LaMori \*\*\* Leonard Wescott & Ann MacAffer \*  
Dan & Shelley Finkle \*\*\* Jennifer Fazziola Yocum  
Anonymous Donor

## 2024 - 2025 INDIVIDUAL MEMBERS

### SUSTAINER \$2,500+

John & Carolyn Assini **	Albert & Linda Dettbarn **	Kathryn Oppedisano
Brenda Baddam	Robert & Suzanne Doyle **	Carl & Joann Paulsen *****
Bob & Martha Blackman ****	David & Linda Fisher *****	Pam Perlman & Jim Kalohn *
Ray Bleser **	Kathleen & Jerel Golub	Bill Rever (In Memory of Dolores Rever)
Lola Bradham Harris	Paula Ann Granger *****	Art & Dottie Salvatore ****
Ed & Barbara Brown **	John & Lucy Halstead *****	Bob & Linda Samson ***
Bryan Cady	In Loving Memory of	Joe Skufca **
Mr. Robert Carrothers *****	Paul Harasimowicz ***	Chris & Anne Spraragen *
Dr. David & Nancy Cerniglia *	Anne & David Harris	Ilene & Chip Stein ****
Jeffrey & Cheryl Christiana **	Chris & Kelly Jordan	Kevin & Tara Testo *
G. Robert & Linda Cooley ****	Jayne Lahut & Katherine Robinson **	Dr. Talonda Thomas
Willard & Linda Cooper *****	Robert J. Langone &	Emily H. Titsworth
Carol Criscione **	Margaret O'Brien *****	Michael & Linda Toohey *****
Fred & Christine Daniels ***	Jack McPadden **	Cal Welch &
Gerald & Loretta DeAngelus	Mark & Patricia Moody **	Caroline Welch Webster*****
Thomas Della Sala *****	Catherine Nutting ****	Chris White & Christopher Marney ***

### ANGEL \$1,000+

Robert & Lynn Abarno *	D. Patrick Fitzgerald ***	Jacqueline L. Marino
M Sylvia Anapolis **	Howard Foote	Dale Miller & Zoe Oxley *****
Eric & Danica Andersen	Elizabeth Fraleigh ***	Mardy Moore *****
Laurene O. Arsenault **	Dr. Denise Mastroianni Gleason &	Steve & Doreen Morgan **
Mike Baker & Freddie Villegas **	Mr. William Gleason ***	Philip & Kathleen Morris **
Donna Ball-Lombardi **	Stephen & Eileen Gower **	Karen & Victor Murdock *****
Betty C & Lyle Barlyn *****	John & Katherine Greenthal *****	Karen Nellis ****
Clyde & Jean Barth ***	William & Lauren Gritsavage	Patricia Norelli & Bryan Sheppeck
Phil & Kathy Bazicki ***	Norene M. Grose *	Leesa & John Oliver **
Charles Franklin Beck	Gary Guenther & Maria Blanchard *	Barbara & Joseph Opalka ***
Mickey & Rylie Blanchfield	Eileen & Tim Guile **	Michelle Ostrelch &
Theone T. Bob *****	Mark & Barrie Handelman	Howard Schlossberg ***
Mike & Kathleen Bokan ***	Dan & Sandi Hanifin *****	Kathy & Sal Palmieri
Mr. Adrian Matthew Breitenstein	Andy & Lorraine Heck	Audrey Patneaud *****
Tom & Joan Brooks *	David & Jessica Hannel	Cindy Phillippe *
Drs. Daniel &	Donald T Hannel ***	Marie & Richard Pidgeon ****
Suzanne Brunelle ***	Bill Hickman (In Memory of Fulvia) *****	Tim & Brigit Pierce
Nell Burrows ***	Chris & Linda Hoffman	Robert & Susan Pierino **
Janet Carmichael ***	Larry & Tina Holford **	Paul Posson
James & Kathleen Chant ***	Peter & Elaine Hutchins *****	Florence Reed *
Mark & Deborah Cieslak **	Carol Haynes & Brad Bischoff *****	Hildy & Herb Reich **
Jim Cochran & Fran Pilato *****	Stephen J. Jabonaski &	Steven & Leah Renzi *****
Margaret T. Connolly *****	Shawn C Thibodeau	Howard & Sharon Riggert *****
Barb & Don Costanzo-Orr **	Gretchen & Tom Jewell ****	Susan L. Riggi **
Robert & Joni Cote ***	Thomas & Shannon Jones *****	Al & Nancy Rosa
Bill & Bonnie Daggett *	Kelley Keefe *	Don Ruberg & Marin Ridgway *****
Richard & Karen D'Ascoli *****	Judy Keller (In Memory of	Larry & Linda Schechter ***
Barry & Beth Davis ***	James T. Keller, Sr.) *****	Carol Shartrand ****
John T. & Amy M. Davis ***	Dr. Peggy King *****	Todd & Melanie Shatynski
Patricia Deacon-Laird	Isabel Krempa *****	Joseph R. Shaver ***
John & Colleen DeMichele **	JoAnn & Gregory LaFlamme *****	Dorothy Sheehan *****
Gilbert & Norma d'Oliveira **	Mark Lam	Frank & Sarah Slingerland ***
Dr. Thomas & Kathleen K. Duff *****	Douglas & Carolyn Larsen **	Gale M. Smith (In Memory of
Janice B. Dyer ****	Robert & Jean Leonard **	Laurin Aycox)
Patricia Eichelberger *	Jim & Mary Lieb *****	David & Karen Stackrow ****
Gerard & Anna Falotico ****	Ed & Judy Lowe	Mary E. Stokes *
Cynthia & Joseph Farone *	Patricia Mahoney *	Frank & Nadine Toma *****
David & Mary Farr	June & Wayne Malary **	Dr. James J Vacek *****
Renee & Evan Feinman *	Michael & Staci Mannion *	Douglas & Kathleen Van Iderstyne **

## 2024 - 2025 INDIVIDUAL MEMBERS

### ANGEL \$1,000+ (CONTINUED)

Robert & Lori Liebert Van Vranken ****	Tom & Lynn Winterberger *****	Susan Craig Zeltmann ***
Gene & Lisa Vitullo *****	Mishka Woodley	Anonymous Donors
Paul Wing	Brad Workman & Maria Phillips	

### BENEFACTOR \$750

Dick & Lou-Ann Aceto ***	Maryl & John Fabian *	Joe & Amy Memole
Dr. Eric & Mrs. Jennifer Andolina ****	Lois Ferro & Lisa Joslin *****	Jamie & Mary Miller *
Ann C. Armstrong *	Dr. & Mr. Kathleen Sturey Fontaine	Richard & Mary Moore ****
Doug & Judy Beers	John & Lori Fraser	Claire Murray *****
James Beninati *****	Charles & Karen Goddard *****	Kathleen M. Nalli **
Lillian Bertalan & Mike DePetrillo ***	Catherine Haag *	Lee & Heidi Newberg
In Loving Memory of Meryl Black	Geoffrey & Ursula Hall ***	Richard & Karen Nicholson *****
Beth & Mark Bonacquist *	Jane & Peter Hamilton ****	Yves & Elaine Nollet **
James & Madelyn Brennan *****	Tom & Connie Hayner ***	Kenneth & Lorena A. O'Brien ***
Judy Breslau & John Ogden *****	Stephane & Kimberly Henes	Chris & Carol Pfister *
Bob & Carolyn Brown	Peter E. Hilton *****	Jacqueline Piper ***
Claire K. Brunkhorst *****	Catherine Julius *****	Larry & Carol Preston **
Mel Burger, Jr. & Kathy Drapeau *****	Charles E. Kilbourne, III *	Christopher & Lynn Purcell *****
Dr. & Mrs. William Busino, Jr. *	Paul & Kerry Koch ***	Randy & Sharon Rivet ***
Brenda Lee Byrne & Kim Valik	Patrice Koehler *****	Barbara & Rick Rizzolo
Judith Calvelli ***	Nina & Igor Kraev *	Andrea Rohloff ****
Jason Cardinale & Mark Smith	Mr. & Mrs. Douglas Kreifels *****	Judith Russell *****
Kathleen & Raymond Cetnar	Norman & Christine Kuchar *****	Ronald & Robin Scharf **
Mary A. Corrado *****	Dee Lashway *	Ken & Cynde Schwartz **
Kevin & Loretta Coughlin ***	Kevin M. Laurenty & Leitha Farrar *****	Terence & Judith Seery
Drs. Thea & John Dalfino	Janice Livingston *****	Linda & Neil Shapiro ***
Gail Denisoff *****	Sally & Bert Longbotham *****	Len Silverstein & Judy Regan ***
Duane & Pamela Dodds *****	Charles & Sharon Maneri *****	Jason Stallard *
Stephen & Dr. Susan Dorsey *****	Elliott & Cathy Masie **	John & Sally Ten Eyck ***
James & Patricia Elbrecht *	Michael McCord *	Meg Urbanski *
		Linda M. Voss ***

### INVESTOR \$500

Stephen & Melanie Anchukaitis ***	Pam Kostbar-Jarvis *****	Roberta & Bob Redmond *
Ralph Blackwood & Nancy Nicholas	Peter & Melissa Lacjan *****	Dave & Elizabeth Reuter *
William Bubniak	Deborah & David LaMontagne *	Jill Roemer ***
Elsie Cole **	Joseph LaPorte *	John & Jill Simoncic ***
L. Berkley & Katharine Davis *****	Peter & Lori Lauricella	Gloria & David Sleeter
Millie Gittinger *****	Keith Lee & James Gaughan *****	Jeff & Gail Smith ***
Edward & Liesl Gorman	David Liebers	Linda Snyder *
George & Joan Gould *****	Marcia MacDonald ****	Dan & Sue Street *****
Mrs. Susan Haswell *****	Monica Mackey & Mark Holmes	Charlie & Sue Sulzmann *****
In Memory of The Hon. Guido A. Loyola ***	James & Theresa Markowicz ***	Steven & Amie Warfield **
Tina & Bill Humphrey	Peg & Ed Neiles *	Howard & Janet Wasser *****
Bob & Claire Karlicek	Jonathan & Joan Pearson *****	Ann, Bill & Lisa Westervelt
Mary E. Kavanagh *****	Dan & Susan Petrivelli	Kevin & Lynne Woods
	Dr. & Mrs. Marshall Price *****	Anonymous Donor

### SUPPORTER \$300

Thomas J. Abbott *****	Anne M. Brockenauer *	Margaret J. Datz *****
Janice & Floyd Adams ***	John & Barbara Burgess	Lewis M. DeFilippo *****
Al & Rosemary Aldi **	Richard & Kathryn Carney **	Bella Dupont
John L. Allen	William & Donna Cavallaro **	Richard & Nancy Erdoes
Richard & Susan Baker ****	Philip & Nancy Clements **	Anne & Stuart Fass *
Patti Bayly *****	John & Stephanie Copeland ***	Michele L. Finin *
Fred & Karen Bever ****	Rabbi Matt & Sharon Cutler ***	Lynn, Paul & Amanda Gemmiti *****
Valerie Bok & Joseph Lomonaco	Joseph & Catherine D'Alessandris	Tom & Janet Gerbino *****

## 2024 - 2025 INDIVIDUAL MEMBERS

### SUPPORTER \$300 cont.

Ronald C. Geuther \*\*\*  
 Suzanne Gold & John Berhaut  
 Charles & Connie Hack \*\*  
 G. Michael & Anne Marie Heim \*\*\*\*  
 Karen Helms & James Resue \*\*  
 Marianne Hogle \*\*  
 Dugald & Sharon Jackson \*\*\*\*  
 Curt & Michele Johnson \*\*\*  
 Janet & Michael Johnson \*\*\*  
 Andrew & Lisa Joslin \*  
 Alan Kaufman & Deborah Roth  
 Charles & Lorraine Knowles \*  
 Tom & Margaret Kralovic \*\*  
 Sharon & Bruce Kunkel \*\*\*\*  
 Ginger LaChapelle & Bill Duffy  
 Barbara S. Lee, Esquire  
 Frank & Sally Lemery

Donald Lipkin & Mary Bowen  
 Joseph & Holly Litz \*\*\*\*  
 George & Marie Lucik \*\*\*\*\*  
 Randy & Cheryl MacNeil \*  
 Janet Mallette  
 Lynn & Ken Manning \*\*\*\*  
 Lynn McKinnon \*\*  
 Ed & Roe McSweeney \*\*\*  
 David J. & Christine F. Miller \*\*  
 Lois A. Mills \*\*\*  
 Judith Ann Mysliborski \*\*  
 John & Donna Olsen \*\*\*\*  
 Ann Parillo  
 Bob & Linda Pommerer \*\*\*\*\*  
 Jane Pollak & John Quinn \*\*\*\*  
 Edward & Deborah Pritchard \*\*\*\*  
 Susan Rehbein \*\*

Robert & Kathleen Reilly \*\*\*  
 Patricia A. Renna \*\*\*\*\*  
 Mrs. Susan Rinaldi \*\*\*\*\*  
 Dorothy D. Sager \*\*\*\*\*  
 Carol A. Schweizer \*\*\*\*\*  
 Michael Sentiwany & Joan Gottwald  
 Kathleen Stachnick  
 Constance Glasgow Styles \*  
 Elaine H. Troy \*\*  
 Ed & Karen Utberg \*\*  
 George & Ruth Ann Virtue \*\*\*\*\*  
 Fred & Winnie Wilhelm \*\*\*\*\*  
 Robert Woods \*\*  
 Donna L Yamin  
 Geraldine Zandri \*  
 King & Queen of 8 \*\*\*\*\*

### FRIEND \$120

Mike & Kris Aliperti  
 John & Ronda Anderson  
 Meredith Anker  
 Reba Architzel \*\*  
 Hugo Bach \*\*\*  
 Charlene Baechel  
 Joseph & Kathleen Bakes  
 William & Alice Bonk \*\*\*\*\*  
 Deborah Booth \*\*\*\*\*  
 Mrs. Joan Boreen \*  
 Jim & Karen Boyd \*  
 Cynthia Zimmer Brabenec  
 Carol Bradshaw (In Memory of  
 Audrey Brown Hughes)  
 Linda Brannigan  
 Rob & Karen Brooks \*\*\*  
 Gail & Halsey Brown  
 Mr. & Mrs. Mark J. Bruce \*\*\*\*\*  
 Bob & Terri Bullington \*\*\*  
 Linda & Steve Bush \*\*\*  
 Bob & Anne Bylancik \*\*\*\*  
 Richard & Rebecca Canuteson \*\*\*\*\*  
 Ms. Sharon Carter  
 Alexander Chupa  
 Ken & Margaret Claflin \*\*\*\*  
 Ernie & Joan Clapper \*\*\*\*\*  
 Joseph & Anne Clark \*  
 Linda Clark  
 Phil & Shirley Clark  
 Mary Lou Classen \*\*  
 Barbara & Thomas Collura  
 Jordan & Mary Ellen Conboy \*  
 Janet R. Conti \*  
 Judy & Tom Corigliano  
 Ed & Pat Culhane  
 Barb & Gary Cunningham \*\*\*\*  
 Christine M. Cuomo \*\*\*\*\*  
 Susan Cuomo-Whitney \*\*  
 Sam Cuva

Jennifer Czupryna \*\*\*  
 Ellen & Joe D'Aniello \*\*\*  
 Mark G. David  
 Michael & Christina DePaula \*\*  
 Dr. Michael & Jackie DeSanti \*\*  
 Barbara Diamond \*  
 Judianne Drebitko \*\*\*  
 David & Linda Drobnicki \*\*  
 Mable & Tom Dudley \*\*  
 Eileen & Lyle Eldred \*\*\*  
 John & Holly Esford  
 Judith E. Ewing \*\*  
 Rosalie R. Fahey  
 Allan & LouAnn Falcon  
 Cindy Fascia  
 Richard Federici \*\*  
 Susan Zasada Ferrara  
 Sandra & Mike Fowler  
 Elaine C. Freedman  
 Anthony Freeman  
 Jack Fuurl  
 Janet E. Gargiulo \*\*  
 Karen Garofallou \*\*\*  
 Anthony George \*  
 David & Sandra Geisinger \*\*\*\*  
 Nellie Georgelos  
 Glenn Gerber \*\*\*\*\*  
 Richard Gould  
 Esther E. Graham  
 Rohdel Green \*  
 T. Griffin & J. Wasko \*  
 Mr. & Mrs. Daniel L. Grygas  
 James S. Guzewich \*\*  
 Joan Ham \*  
 Pauline & Henry Hamelin \*  
 Paul Hauschen & Mary Anne Hess  
 Kathleen & Bruce Heap \*\*\*\*  
 Jane W Hendrick  
 Gary & Mildred Holloway \*\*\*

David & Denise Horan \*  
 Libby Horn \*\*\*\*  
 Kevin & Justine Hughes  
 Marie L. Hurteau \*  
 J. Husta  
 Susan J. Hutton \*\*\*\*\*  
 Carol Hyde & Sanjay Correa  
 Mrs. Lawrence Jackson \*\*\*\*\*  
 Robert L. Jackson &  
 Sandra Buschak-Jackson \*\*  
 Vince & Kathy Jimino \*  
 Ron & Mary Ann Johnson \*  
 Rev. James Kane  
 Saul & Ellen Kattleman \*\*  
 Fred & Carol Katz  
 Tim & Linda Keeler  
 Daniel & Pamela Kelly \*\*\*  
 Maureen F. Kelly  
 David & Sheila Kiehle \*\*\*  
 Derek, Carrie & Ben Kirkaldy  
 Josie Kivort \*\*  
 Arlo Klinetob \*\*\*  
 John & Dawn Knutson \*\*  
 Steven & Barbara Kouray  
 Mary Ann Kritz  
 Matthew & Dorothy Kritz \*\*\*\*\*  
 Kevin Kuhne & Laura Silver Kuhne \*\*\*\*\*  
 A. Patricia Lavin \*  
 Heather Lawton \*\*  
 Hon. Howard Levine \*\*\*\*\*  
 Joseph Levy & Zoe Nousiainen  
 Walter & Jenny Lippmann  
 Janet Liszewski \*\*  
 Judge & Mrs. Peter S. Loomis \*  
 Victor & Karen Lou \*\*\*\*\*  
 Rosemary Maguire  
 Tammy Mancuso  
 Janice Mansfield  
 Michele Marcil \*\*\*

## 2024 - 2025 INDIVIDUAL MEMBERS

### FRIEND \$120 (CONTINUED)

Bruce & Leah Mason ****	Orlando Pigliavento	Jean & David Stafford
James Matejka & Beth Ryan	Kathryn & Patrick Piper *	Amy Jane Steiner
Jeanette & Bob Matthews ****	Neil & Shari Piper *	Peg Sternfeld ***
John & Ginni Mazur *****	Kathleen M. Pitney ****	Pam Strianese
Chris & Marissa McDonald	David & Susan Plank *	Deborah Studwell
John & Susan McLeod **	Robert & Theresa Poitras *	Julie Tama ***
Barbara & George Menge	Francis & Helen Pugliese *****	Joan Taylor **
Linda Mertz & Paul Partridge	Douglas & Nancy Purcell	Herb Terns & Gillian Scott
Dominick & Mary Militano	Linda Quintavalle	Margo Thompson *
Julie & Lou Miller	Jim & Jenny Quirk *	Joseph & Sharon Thorpe *****
Paula Miller ***	Mark & Chris Rakus **	Marlene Towne *****
Kenneth P. Mortensen, Jr.	Kathy Ramsey	Sue Trumpick
Debra Moyer	Valerie K. Ramsey	Edith Tull **
Stephen & Mary Muller ***	Richard & Kathryn Rose **	Dennis & Sylvia Ulion *
Tom & Robin Murphy *	Patricia & Samantha Rushton **	Janet P. Vavasour
Michael & Susanne Murray ***	Dr. & Mrs. Clifford J. Russ *****	Claudia Varga
Marilyn H. Muzzi *****	Tamara & Thomas Russell **	David & Pam Walsh **
Liz Nardacci & Joe DeThomasis ***	Ann-Marie Rutkowski *****	Anita Walther *****
Robert & Patricia Obrecht	Patricia Sarnowski ****	Susan F. Ward ***
Mr. Michael J. O'Connor *	Mary C. Schultheis	Melissa Watson
Thomas & Patricia O'Malley *	William & Susan Schultz **	Meaghan Way
Edward M. O'Meara	Teresa Scilipote	Rob & Renee Wheelock
Elizabeth R O'Neil	Steve & Debby Seaboyer *	Kilburn & Sandra White *
Barb & Gary Palmer *****	Wayne T. & Susan D. Senecal *****	Tim & Kathleen Wiley ***
Diane R. Pastore *	Katherine Sharrow *	Gary & Donna Williams **
Amalia Pawlak ***	Peter & Linda Shea *	Linda & Chet Wilson ****
Peter F. Pedone *****	Don Sherman **	Nancy Wilson
Mr. & Mrs. Terry M. Peterson	Phyllis Shook	Wendy Wilson **
Patricia & Richard Pezzano *	Bernard Shufon	William F. Zebuda ****
Reed Philippi	Cynthia & Thomas Siatkowski	Jennifer (Mrs. William) Ziskin
Rocky & Nancy Piaggione *	Debbie Smith & Diane Whitehead	Anonymous Donors
Patrick Piccirilli	Rick & Rena Spanbauer **	

**WE THANK YOU FOR  
YOUR SUPPORT!**

\* Indicates 5 years of giving.  
\*\* Indicates 10 years of giving.  
\*\*\* Indicates 15 years of giving.  
\*\*\*\* Indicates 20 years of giving.  
\*\*\*\*\* Indicates 25 years of giving.  
\*\*\*\*\* Indicates 30 years of giving.

**MUSIC, COMEDY, COMMUNITY**

**fall  
in love  
with  
UPH**



**upcoming  
shows and events.**



**Universal Preservation Hall** 25 Washington St. - Downtown Saratoga | [atUPH.org](http://atUPH.org)



Proud co-sponsors of the

# AMBASSADOR PROGRAMS

of the Proctors Collaborative

The Ambassador Programs employ men and women from community partner organizations; **The City Mission of Schenectady, Hope House** in Albany and **RISE Housing and Support Services** in Saratoga to greet patrons at shows making them feel welcome when they visit. The program has assisted hundreds of local residents on their journey out of poverty and other life challenges. It is a model of businesses and service organizations and their clients working together to make our communities stronger.



learn more about our ambassadors!  
scan here >



# celebrating the arts that bring us together.

Whether on the page, on the screen, on the stage, or anywhere else, art brings life to life. KeyBank is grateful for the passion and creativity that inspire and enrich all our lives, and we're proud to support the arts across our communities. Thank you, Proctors Collaborative, for making a difference.





# PRESTWICK CHASE

**FOR THE  
BEST SEASON  
OF YOUR  
LIFE**



## **SARATOGA'S PREMIER INDEPENDENT LIVING COMMUNITY**

At Prestwick Chase, staying connected is essential to well-being, which is why our community is designed for you to stay active and live life to the fullest.

### **FAMILY OWNED AND OPERATED**

- No Buy-ins, Affordable Pricing
- Transportation Included
- 24-Hr Maintenance Services
- Screened-in Balconies & Porches
- Washer/Dryer in Each Apt.
- 4-Star Restaurant & Bar
- Pet Friendly
- Monthly Housekeeping



**SCHEDULE A TOUR TODAY! 518.584.7766 | [PRESTWICKCHASE.COM](https://www.prestwickchase.com)**