



432 State St. Schenectady, NY 12305

D D : 42.811322, -73.942201

www.proctors.org

ADDY TECHNICAL PACKAGE

As of 4/1/2018

THEATRE STAFF

Email address format is first initial, last name @proctors.org

CEO	Philip Morris	(518)382-3884	Ext.113
Chief of Staff	Jean Leonard		Ext.127
Operations Director	Dan Sheehan		Ext.116
Production Manager	Keith Schmitt		Ext.188
Technical Director	James Petersen		Ext.132
Technical Instructor	Isaac Scranton		Ext.703
Box Office Manager	Michael Bacchi		Ext.169
Fax		(518)346-2468	

DIMENSIONS

Proscenium	22' Wide x 11" High
Stage Depth -Curtain Line to Back Wall	Approx. 19'8"
-Curtain Line to Apron Edge	10'
-Total	Approx. 30'
Offstage right From Center Line	11'
Offstage left From Center Line	11'
Grid Height	11'9"

LOADING

Third-story double-door gated loading bay from back alley. Crane required.
Stairwell access behind double-door Audience Entrance, or passenger elevator.

DIRECTIONS

Directions to loading doors: Rt. 890 to Broadway exit. Follow signs for Proctors. At the first traffic light stay in the center lane and continue on Broadway towards State Street. Turn right on unmarked alley between Proctors and the NYS Lottery Building. Turn left onto Lamp Lane. Loading doors are three stories above the alleyway.

PARKING

The loading dock can accommodate 3 vehicles wide. Bus parking is available in the loading dock or on Broadway in front of the Lottery Building. Personal vehicles can be parked in the Parking Garage located across Broadway from the lottery building, accessible by Hamilton Street.

SEATING CAPACITY

House	81
Total	100
Flexible Seating	<u> 19 </u> (Portable)
Total w/Portable	100

ELECTRICS

Power Services

1 x 100 Amp Three Phase

Electrical service is female cam-lok or bare ends

Theatrical grid

The Addy has a dead hung grid made up of 14 schedule-80 water pipes 11'5" off the floor, with two 20 amp circuits for each pipe.

LIGHTING

Control

ETC Ion console

Instruments

See Attached Lighting Patch List

ADDY LIGHTS CHANNEL GUIDE (3/15/2018)							
CHAN NEL	INSTRU MENT	ADDR ESS	POSITIO N	CHAN NEL	INSTRU MENT	ADDR ESS	POSITIO N
1	Chauvet	1	House Lights	18	Chauvet	115	DSXR Downl ight
2	Source- Four	8	Safety Lights (Parked)	19	Source- Four	122	DSR Sidelig ht
3	Source- Four	13	USR Front Light	20	Source- Four	129	CSR Sidelig ht
4	Source- Four	23	USC Front Light	21	Chauvet	136	CSR Downl ight
5	Source- Four	28	USL Front Light	22	Chauvet	143	CS Downl ight
6	Chauvet	37	DSXL	23	Chauvet	150	CSL Downl ight
7	Chauvet	44	DSCL	24	Source- Four	157	CSL Sidelig ht
8	Chauvet	51	DSCR	25	Chauvet	162	USL Downl ight
9	Chauvet	58	DSXR	26	Chauvet	169	USC Downl ight
10	Source- Four	65	CSL	27	Chauvet	176	USR Downl ight
11	Source- Four	70	CS	28	Chauvet	183	XUSR Downl ight
12	Source- Four	75	CSR	29	Chauvet	190	CSR Backli ght
13	Chauvet	80	DSL Downlig ht	30	Chauvet	197	CSL Backli ght
14	Source- Four	87	DSL Sidelight	31	Chauvet	204	XUSL Downl ight

15	Chauvet	94	DSR Downlight					
16	Chauvet	101	DSC Downlight					
17	Chauvet	108	DSR					

AUDIO

Speaker System

- Main system is Left/Center/Right d&b 12S speaker and one 18S sub, plus 4 d&b 8S as surround and fill speakers, all flown from the grid.
- 4 QSC K-12 Powered monitors
- Audio console is a Yamaha QL5/QL1 digital mixing board

Microphones (Confirm Current Availability)

6 SM 58
4 SM 57
4 SM 81
4 SM 98

Intercom

6 Headset/Beltpack
1 CS-200 K 2-channel intercom system

FLY SYSTEM

N/A

SOFT GOODS INVENTORY

2 5'x11' black curtain masking
2 12'x11' black curtain masking
1 24'x11' CYC

MISCELLANEOUS

30 Black moveable chairs
2 Black folding tables
1 Baby Grand Piano in Lobby
2 mops/1 rolling mop bucket
3 large push-brooms
Assorted cleaning supplies

PROJECTION

- 1 Movie Screen (DS of main curtain) is 12' x 12' non-perforated.

WARDROBE AND DRESSING ROOMS

- 2 Equity-standard dressing rooms
- 2 Unisex showers

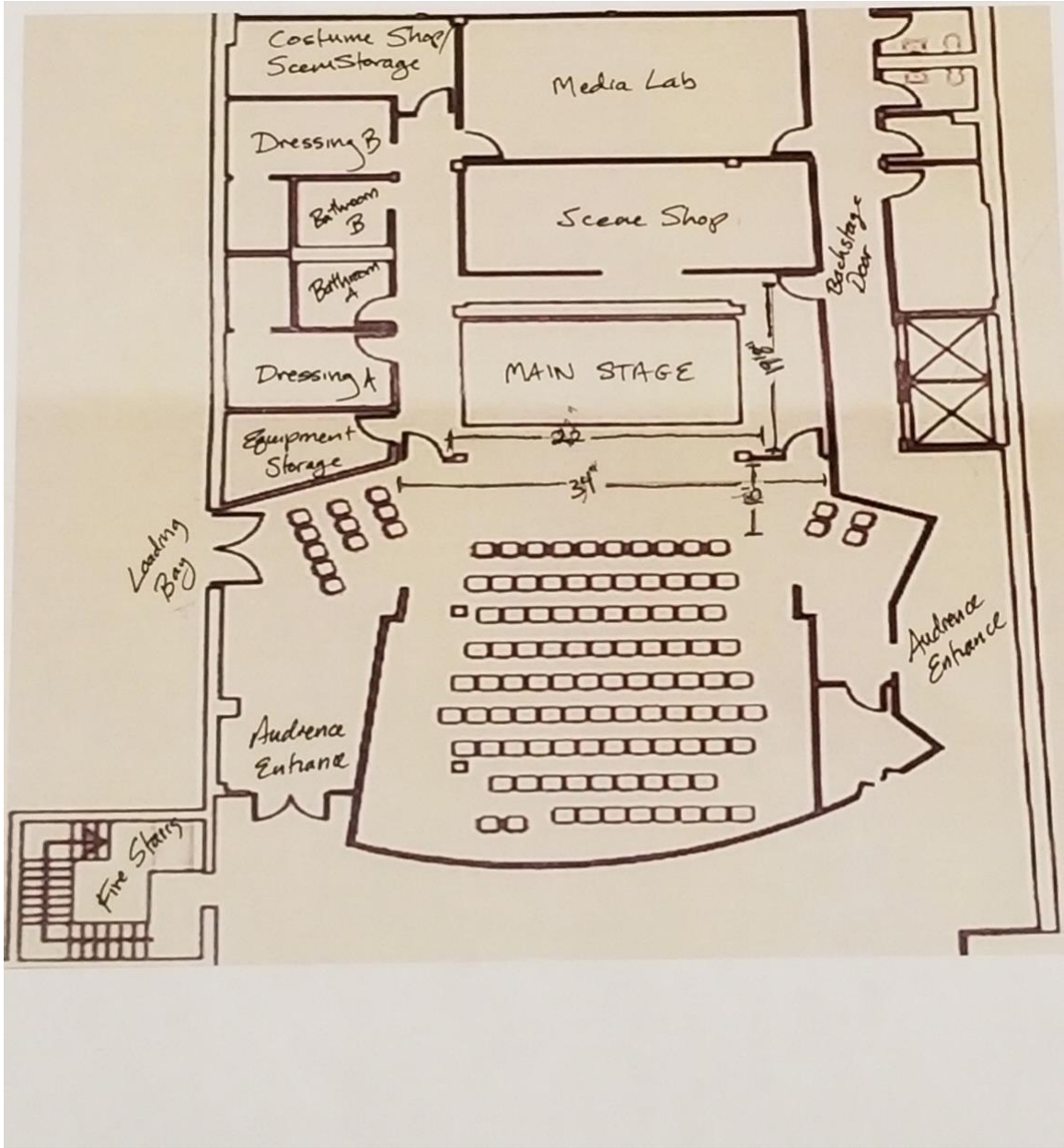
Dressing Room Descriptions

- 2 5-seat Dressing Rooms with 1 shower and 1 sink apiece
- 2 Gender Neutral Bathrooms

COSTUME SHOP

- 2 Bernina 215 Sewing Machines
- Rowena Iron w/Ironing Board
- Folding tables

Let's be Green! Please contact our housekeeping dept. to coordinate your recycling.
See Attached Ground Plan



LOCAL COMPANY INFORMATION

BANKS

KeyBank	315 State St.	(518)381-5000
Citizens Bank	501 State St.	(518)370-7070
Bank of America	500 State St.	(800)432-1000
NBT Bank	433 State St.	(518)381-4512

There is an ATM in the theatre lobby.

GENERAL SCHENECTADY INFO

<http://www.visitschenectady.com>

HOTELS

Parker Inn	434 State St.	(518)688-1001
Hampton Inn	450 State St.	(518)377-4500
Double Tree	100 Nott Terrace	(518)393-4141
Courtyard Marriott	240 Harborside Dr	(518)579-6620
Glen Sanders Mansion	1 Glen Ave. Scotia	(518)688-2138
The Desmond	Albany Airport	(518)869-8100
Belvedere Inn	1926 Curry Rd	(518)630-4020

MEDICAL

Hospital

Ellis Hospital	1101 Nott St.	
	Admitting	(518)382-4369
	Emergency	(518)382-4121

Urgent Care

EmUrgentCare	1769 Union St.,	(518)264-9000
EmUrgentCare	115 Saratoga Rd., Glenville	(518)264-2900

General

Michael O'Brien(rock doc)	Scotia, NY	(518)469-7278
Robert J. Donohue Jr.	1201 Nott St. Suite 102	(518)382-7503

Orthopedist

Richard D'Ascoli	530 Liberty St.	(518)382-7200
------------------	-----------------	---------------

Ear Nose & Throat

Capitol Otolaryngology	Stuy. Plaza, Albany	(518)482-9111
------------------------	---------------------	---------------

Dentist

Dr. Liebers (24hr. on call)	1070 Nott St.	(518)374-4118
Ken Schwartz	833 Union St.	(518)374-1935
David Coppola	34 Vley Rd. Scotia	(518)370-5038

Chiropractors

Christopher Tomaselli	15 Angers Ave	(518)356-3137
Tim Mags	1462 Erie Blvd.	(518)393-6566
David Civale	#1 Swaggertown Rd.	(518)377-2207

Scotia, NY

Podiatrist

R. Di Caprio Jr.	1354 Union St.	(518)370-4331
------------------	----------------	---------------

Ob/Gyn

Women's Health Care	1202 Troy-Scdy Rd.	(518)220-9393
---------------------	--------------------	---------------

Latham, NY

Pharmacy

CVS Pharmacy	415 State St.	(518)372-4479
--------------	---------------	---------------

Massage Therapists

Physical Therapy Assoc.	1533 Union St.	(518)382-9166
Marjorie M. Dalton		(518)374-4648
Kathleen A, Carroll, LMT	53 Apeldorn	(518)573-8612
Richard Klaus	276 State St.	(225)205-0838

LAUNDRY/DRY CLEANING

Sav-Mor	21 State St	(518)346-4241
Mid Towne Laundry Center	1124 State St.	(518)382-9575

HEALTH CLUBS

YMCA	433 State St.	(518)881-0117
Bally's	1448 Balltown Rd	(800)695-8111
Elite Health & Fitness	480 Balltown Rd	(518)377-7771

TRANSPORTATION

Brown Coach	123 Saratoga Rd Scotia	(518)399-3128
Wade Tours	797 Burdeck St	(518)355-4500
Blue & White Taxi	54 Freemans Brdg Rd	(518)370-0300
Advantage Limousine	137 Lark St Albany	(518)433-0100
Premiere Limousine	Albany	(518)459-6123

GROCERY STORES

Price Chopper	832 McClellan	(518)372-6553
---------------	---------------	---------------

PIANO TUNER

Jonathan Cohen	jc.weasel@verizon.net	(518)439-9177
----------------	--	---------------

DANCE STUDIO

Meyers Dance Studio	418 Liberty St.	(518)374-0376
---------------------	-----------------	---------------

POST OFFICE

Schenectady Branch	29 Jay St.	(518)395-5400
--------------------	------------	---------------

CATERERS

Homestyle Caterers	1720 Union St	(518)372-7270
Turf Tavern	40 Mohawk Ave. Scotia	(518)393-3344
Glen Sanders Mansion	1 Glen Ave. Scotia	(518)374-7262

PARKING

LAZ Parking Garage	220 Broadway	(518) 346-0614
--------------------	--------------	----------------

PHONE LINES

Proctor's has six phone lines backstage that incoming productions can use. They are all patchable to dressing rooms and all production areas. The use of these lines is charged at a flat rate.

Phone Numbers are assignable (518) 881-1824 through 1829

WELLNESS

Crossroads Gifts and Wellness(A Newsies favorite!)

131-133 Jay St. (518) 357-8366
www.crossroadsgallery.com

9 Miles East (local food delivered for busy people 11am Wed.)

(518) 695-4158

www.9mileseast.com

Studio 4 Yoga & Pilates

151 Lafayette St. (518) 280-9139

www.studio4hotyoga.com

Yoga Bliss

140 Erie Blvd. (518) 894-7086

www.yogabliss.com